

NOGS LOG

July 2011

Volume 52, Number 1



July 11 - NOGS Luncheon

Presentation: Shallow Marine Fluvial Depositional Systems Study
Presenter: Tim Bennett, Orbit Energy, Inc. See page 9 for more information.

Magnified Well Data Quality



That is TGS' Focus

Save time and money – TGS has already closely examined and processed well data for standardization and quality assurance, backed by a focused customer support team.

Complete Curve Digital Wells

LAS and LAS Plus library expanding across North America

Spatially Accurate Directional Surveys

Directional Survey Plus data thoroughly researched and reprocessed

Nationwide Production Data

Daily incremental updates available with visualization software

Formation Tops Picked

Available in major basins across North America

Find out more at www.tgsnopec.com/welldata or contact TGS Well Data at 281-319-4944 or WellData@tgsnopec.com



Geophysical
Products



Geological
Products



Imaging
Services



www.tgsnopec.com

NOGS LOG

Published monthly by the New Orleans Geological Society. This issue was sent to press on June 17, 2011.

Interested *NOGS LOG* contributors may send requests to nogseditor@gmail.com. Requests for advertising should contact the NOGS office at info@nogs.org.

INSIDE THIS ISSUE

Special Features:

- July Luncheon Abstract
and Biography Page 9
- Past President's
Luncheon Page 10
- Field Trips: Have they gone out of
style? Page 12
- NOGS Science Fair Winner
Ayla Miller Page 15
- Click to Pay NOGS
Online Page 28

Regular Features:

- President's Letter Page 5
- Upcoming Events and
Activities Page 7
- Drill Bits
Pages 18-20
- Info & Tidbits Page 23
- NOGA News Page 27

ON THE COVER

Photo taken by Dr. Richard Langford

In the picture: David Tatum

The photograph was taken in August of 2005. The outcrop in the picture is the Cedar Mesa Sandstonean early Permian (Wolfcampian) eolian sandstone that crops out in southeastern Utah. The Cedar Mesa, which intertongues with the fluvial Cutler formation and the margin of the Permian Dune Sea in the Needles District of Canyonlands National Park. Of interest to the hydrocarbon industry are interbedded red and white strata in the Cedar Mesa. The red coloration originated in the desert environment at the time of deposition. The white units, bleached by acidic reducing fluids after Laramide uplift of the plateau presumably represent exhumed hydrocarbon reservoirs or migration paths. The oxidation-reduction fronts are often controlled by the stratigraphy. The outcrop of Cedar Mesa sandstone provides a three-dimensional view, which allows observations of cross strata and bounding surface architecture from bedform migration.

FROM THE EDITOR



Hello fellow Society members, this is my first column as your new *NOGS LOG* editor. This year's *NOGS LOG* will have several changes. As the editor, I will write a short column each issue discussing some of the events in the oil and gas industry as well as the changes that we'll make to the *NOGS LOG*. One of the first changes is the cover. We have removed the traditional cover, replacing it with a geological picture. So this is a formal invitation for members to send in their most unique geological photos. I hope you'll enjoy the other changes we'll make throughout the year.

The Society's website has also been updated for the 21st century. Ed Picou and Annette Hudson have added PayPal as a way to pay dues and make NOGS donations online. This new feature is a wonderful convenience to the Society, and I highly recommend everyone use it!

In closing, I would like to remind everyone what our objective and mission is at the New Orleans Geological Society:

The New Orleans Geological Society was organized on October 3, 1941, as a non-profit organization for the purpose of facilitating the development of the profession and science of Geology, with specific emphasis to exploration and production of petroleum and natural gas. Secondary related objectives include the dissemination of pertinent geological and environmental technological data, and the maintenance of a high standard of professional conduct of its members.

Thanks, David Tatum - *NOGS LOG* Editor

Get More from your Core

With reservoirs becoming increasingly complex, you need the most accurate information you can get to better understand your reservoir.

Weatherford Labs helps you get more from your core by combining an unsurpassed global team of geoscientists, engineers, technicians and researchers with the industry's most comprehensive, integrated laboratory services worldwide. From core analysis, sorption, geochemistry and isotopic composition to detailed basin modeling and comprehensive data packages, we provide you with real reservoir rock and fluid information that hasn't been distilled by a simulator or iterated by software.

We call it **"The Ground Truth™"** – giving you the accurate answers you need for better reservoir understanding. You'll call it a better return on your reservoir investment. To learn more, contact TheGroundTruth@weatherfordlabs.com.



© 2011 Weatherford. All rights reserved. Incorporates proprietary and patented Weatherford technology.



**Shell has worked in partnership
with the NOGS for many years, and
is proud to count the society among
its closest business associates.**

The New Orleans Geological Society was organized in 1941 to foster scientific research and advance the science of geology. Particular emphasis is laid on the exploration for and production of petroleum and natural gas. Related objectives include encouraging the adoption of improved methods of exploration, disseminating pertinent geological and technological data, and maintaining a high standard of professional conduct among its members.

www.shell.com/us/sepc

**It's no illusion...
Core Lab offers everything you need.**



©2009 Core Laboratories. All rights reserved.

Unconventional resource exploitation • Gas shale experts • Deepwater GOM authority
Capacity for fast turnaround • High-quality people • Global support
Industry leadership and reliability • Proprietary and patented technologies • Experience

www.corelab.com/rd/petroleumservices • 24-hour wellsite service hotline: 504-733-6583



from the President

I can't begin this new fiscal year as President of NOGS without thanking and acknowledging those who made the past year successful and laid the foundation for the incoming board to stand on and build this year's program. Last June, David Reiter was transferred to Houston by Eni Petroleum. He had to abruptly resign the President's office, and Rick Kear, the new Vice President was asked to step in quickly. Few people would want to have this volunteer workload suddenly dumped into their laps. However, Rick shouldered the load and ran full steam ahead. The NOGS organization is grateful for his enormous contribution. As Rick picked up the presidential duties, the Vice President's job became vacant. Eric Zimmerman was asked (maybe coerced) to become our 2010-2011 Vice President. His primary job was to develop a speaker list for the year. He quickly filled our meeting schedule with a variety of topics that should appeal to most of our geologists. To Rick and Eric -- we give our sincere thanks.

The acknowledgements can't stop here. Will Jorgensen did a great job keeping the many accounts in our organization in perfect balance to publish our field study volume and run our daily meetings and events. Penne Rappold did an excellent job as our secretary for this past year, documenting all of NOGS business

discussions. Fran Wiseman took the task of editor of the *NOGS LOG* and did a very professional job. Ed Picou continued to be the master of our Web site.

The outgoing and incoming boards must also stop and mention how NOGS and its operations would quickly come to a halt without its office manager: Annette Hudson. The majority of members don't get to observe the dedication and commitment she demonstrates daily on the job.

I would like to introduce the incoming board for 2011-2012. President Elect will be Will Jorgensen. He is hard-working, professional and young. We are lucky to have our newer members get involved in this organization. Our Vice President will be Daisy Pate. Chuck Holman will become Secretary for the board. The Treasurer's duty will fall to Bay Salmeron. Our Log Editor will be David Tatum, and our new Editor-Elect will be Jordan Heltz. Our three directors are Jack Langford, Art Johnson and Mike Fein. This new board (with three totally new faces) should receive your encouraging thoughts and comments because we will work to execute our duties to the high standards previously established in the past years.

Bob

NOGS Office

Office Manager: Annette Hudson

Office Hours: 8:30 a.m. – 3:30 p.m. on Monday-Wednesday-Friday

Tel: 504-561-8980 Fax: 504-561-8988

E-mail: info@nogs.org Website: www.nogs.org

The office is located at Suite 300, 810 Union Street, New Orleans, LA 70112.

Correspondence and all luncheon reservations should be sent to the above address.

**BOARD OF DIRECTORS**

President	Bob Hafner
Vice President	Daisy Pate
Secretary	Chuck Holman
Treasurer	Bay Salmeron
President-Elect	Will Jorgensen
Editor	David Tatum
Director 2012	Arthur H. Johnson
Director 2013	Jack Langford
Director 2014	Michael N. Fein

Company**Phone****E-mail**

US Army Corp of Engineers	504-862-1775	ottohaf@aol.com
Independent	504-975-6735	daisy.pate@gmail.com
TGS	504-524-3450	charleswholman@bellsouth.net
Shell	504-728-6339	bay.salmeron@tgsnopec.com
Chevron	985-773-6477	william.r.jorgensen@shell.com
Hydrate Energy International	504-464-6208	nogseditor@gmail.com
JCL Services	985-764-2527	artjohnson51@hotmail.com
W & T Offshore	504-210-8148	jclangford@latterblum.com
		mikef@wt offshore.com

COMMITTEE

AAPG Delegates
AAPG Student Chapter
AAPG Student Chapter
Advertising-Log
Auditing
Awards
Ballot
Best Paper
Continuing Education
Employment Counseling
Entertainment
Environmental
External Affairs
Field Trip
Finance and Investment
Historical
Membership/Directory

Chairperson

William M. Whiting
Gabriella March
Andrew Ranson
Nicole Cammarata
Will Jorgensen
Michael N. Fein
Bay Salmeron
Brenda Reilly
TBA
TBA
Will Jorgensen
Daisy Pate
Michael A. Fogarty
TBA
Bay Salmeron
Edward B. Picou, Jr.
Carlo C. Christina
Tom Klekamp

Consultant	504-947-8495
Tulane University	
UNO	337-578-5587
Schlumberger	504-592-5317
Shell	504-728-6339
W & T Offshore	504-210-8148
TGS	504-524-3450
Geological Consulting LLC.	504-430-4240

bootscon@aol.com
gmarch@tulane.edu
aranson@uno.edu
ncammarata@slb.com
william.r.jorgensen@shell.com
mikef@wt offshore.com
bay.salmeron@tgsnopec.com
reillybe@yahoo.com

New Geoscientists (NGNO)
Nominating
Non-Technical Education
Office Operations
Publications Sales
Photography
School Outreach
Scouting
Sponsorship/Houston
Technical Projects
Ad Hoc Committee on
University Support

TBA
Scott A. Wainwright
Duncan Goldthwaite
Rick Kear
Edward B. Picou, Jr.
Tom Klekamp
Thomas C. Bergeon
Carol Rooney
David E. Reiter
TBA

Shell	504-728-6339
US Army Corp of Engineers	504-957-4372
Sylvan Energy, LLC	603-523-4808
TGS	504-524-3450
Consultant	504-529-5155
Retired (C & R Expl. Inc)	504-835-4116
Amber Resources	985-845-4046
Bret Exploration Co Inc	504-889-2700
Consultant	504-887-4377
Schlumberger	504-592-5376
Consultant	504-529-5155
Amber Resources LLC	985-845-4046
Century Exploration	504-832-3772
Consultant Geologist	504-835-1909
Eni Petroleum	

william.r.jorgensen@shell.com
daisy.pate@gmail.com
mike.a.fogarty@gmail.com
bay.salmeron@tgsnopec.com
epicou@bellsouth.net
Carlocc398@aol.com
klekamp@bellsouth.net
Scott_wainwright@hotmail.com
DGldthwt@aol.com
kear1@new-orleans.oilfield.slb.com
epicou@bellsouth.net
klekamp@bellsouth.net
Tom.bergeon@centuryx.com
carolbrooney@aol.com
david.reiter@enipetroleum.com

NOGS LOG STAFF

Editor	David Tatum
Editor-Elect	Jordan Heltz
Auxiliary	Susie Baker
Info Tidbits	David Tatum
Drill Bits	Carlo C. Christina
Layout	Jannette Inc.
Webmaster	Edward B. Picou, Jr.

Chevron	985-773-6477
Chevron	985-773-7163
NOGA	504-466-4483
Chevron	985-773-6477
Retired (C & R Expl. Inc)	
Consultant	504-529-5155

nogseditor@gmail.com
jordan.heltz@chevron.com
sbaker1650@aol.com
nogseditor@gmail.com
drillbits81@yahoo.com
epicou@bellsouth.net

NOGS AUXILIARY**Officers**

President	Jean Jones
1st Vice-President	Alma Dunlap
2nd Vice-President	Judy Sabaté
Secretary	Peggy Rogers
Treasurer	Judy Lemarié
Parliamentarian	Beverly Kastler
Member-at-Large	Linda Peirce

Phone
504-738-8091
504-737-2678
504-861-4335
504-392-6323
504-393-8659
504-286-0879
504-393-7365

Directors

Peggy Campbell
Ruth Grimes
Gerry Waguespack
Carol Andrews
Susie Baker
Joan Collier

Year

2009-11	504-283-2505
2009-11	504-392-8103
2009-11	504-737-0532
2010-12	504-887-3432
2010-12	504-466-4483
2010-12	504-833-1738

Upcoming Events and Activities

July 11 - NOGS Luncheon

*** At the Holiday Inn Downtown Superdome ***

\$2.00 validated parking in hotel garage

Guest speaker Tim Bennett, Orbit Energy, Inc. in Lafayette
will present

“Shallow Marine Fluvial Depositional Systems Study.”

(See page 9 for Abstract and Biography)

HOLIDAY INN DOWNTOWN SUPERDOME

Check with concierge or
front desk for location

Lunch served at 11:30am

ADMISSION:

with reservation \$30.00

without reservation \$35.00

Student Member with reservation Free

August 1 - NOGS Luncheon

Holiday Inn Downtown Superdome. Guest speaker David Garner, Shell Exploration & Production Co. in New Orleans, will present: Integrating Technologies to Unlock New Volumes in a Mature Deepwater Gulf of Mexico Field.”

August 11-12 - 15th Annual Deepwater Technical Symposium

Hilton Riverside Hotel. Sponsored by SPE-Delta - AADE - NOGS.

More information available in the next *LOG*

NOGS CONTACT LIST

--- continued from previous page ---

MEMORIAL FOUNDATION

BOARD OF TRUSTEES

		Company	Phone	E-mail
2011-12 Chairman	Rick Kear	Schlumberger	504-592-5376	kearl@new-orleans.oilfield.slb.com
2011-12 Secretary	Bob Hafner			ottohaf@aol.com
2011-12 Trustee	Monte Shalett	Berkshire Exploration Co	504-831-7779	mshalett@gmail.net
2011-12 Trustee	James Swaney	BOEMRE	504-736-2677	james.swaney@boemre.gov
2012-13 Trustee	Jennifer Connolly	Shell	504-728-6411	jennifer.connolly@shell.com
2012-13 Trustee	William M. Whiting	Consultant	504-947-8495	bootscon@aol.com
2013-14 Trustee	J. David Cope	ANKOR Energy LLC	504-596-3672	dcope@ankorenergy.com
2013-14 Trustee	Tom Klekamp	Amber Resources LLC	985-845-4046	klekamp@bellsouth.net

AAPG DELEGATES

Term Ends

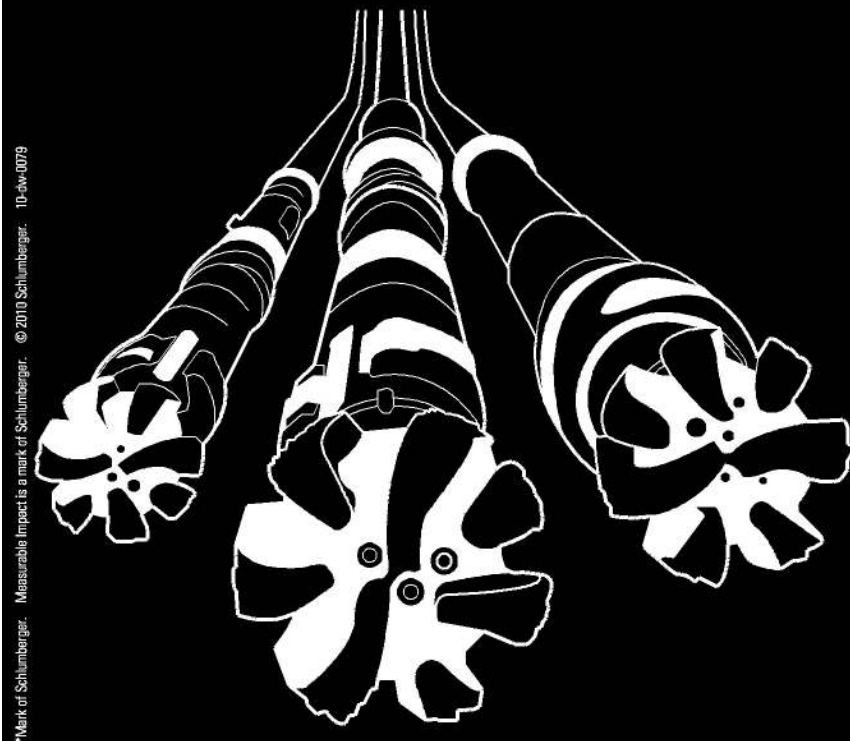
2012	William Whiting	Consultant	504-947-8495	bootscon@aol.com
2012	Jim Zotkiewicz	Zot Oil & Gas	504-831-4694	jimzot38@zotoil.com
2012(a)	David E. Balcer	Chevron	985-773-6725	dbalcer@Chevron.com
2012(a)	Richard J. Stancliffe	Shell Expl & Prod Co.	504-728-7553	richard.stancliffe@shell.com
2014	Arthur H. Johnson	Hydrate Energy International	504-464-6208	artjohnson51@hotmail.com
2014	Brenda Reilly	Geological Consulting LLC.	504-430-4240	reillybe@yahoo.com
2014(a)	Elizabeth C. McDade	McMoRan Exploration Co	504-582-4510	ecmcdade@bellsouth.net
2014(a)	Frances A. Wiseman	BOEMRE	504-736-2912	frances.wiseman@boemre.gov

Deep Water

WELL CONSTRUCTION

Are all your services deepwater ready?

Control Measures	Complexity/Process + Exposure	Preparedness				
		High				Low
	High	-5	-10	-15	-20	-25
	-5	-4	-8	-12	-16	-20
	-4	-3	-6	-9	-12	-15
	-3	-2	-4	-6	-8	-10
	-2	-1	-2	-3	-4	-5
	-1	Low				
		People + Competency				
		1	2	3	4	5



Our Project Readiness Assessment (PRA) approach has been applied and improved over the last 5 years.

All deepwater projects in which Schlumberger participates benefit from our PRA process, which complies with new U.S. regulatory requirements. This helps deliver seamless, efficient startup, and reduced NPT.

Learn more at

www.slb.com/deepwaterready

Global Expertise
Innovative Technology
Measurable Impact

Schlumberger

*Mark of Schlumberger. Measurable Impact is a mark of Schlumberger. © 2010 Schlumberger. 10-dw-0079

July 11 NOGS Luncheon Presentation

At the Holiday Inn Downtown Superdome

Shallow Marine Fluvial Depositional Systems Study

presented by

Tim Bennett

Orbit Energy, Inc., Lafayette, LA

ABSTRACT

The presentation focuses on predrill ideology in shallow marine depositional systems and their association with hydrocarbons, using a comprehensive series of seismic attributes, tied with detailed subsurface geology from

different areas in the world. The talk focuses on producing fields' analogs with prospects that the listener decides whether to drill.

BIOGRAPHY



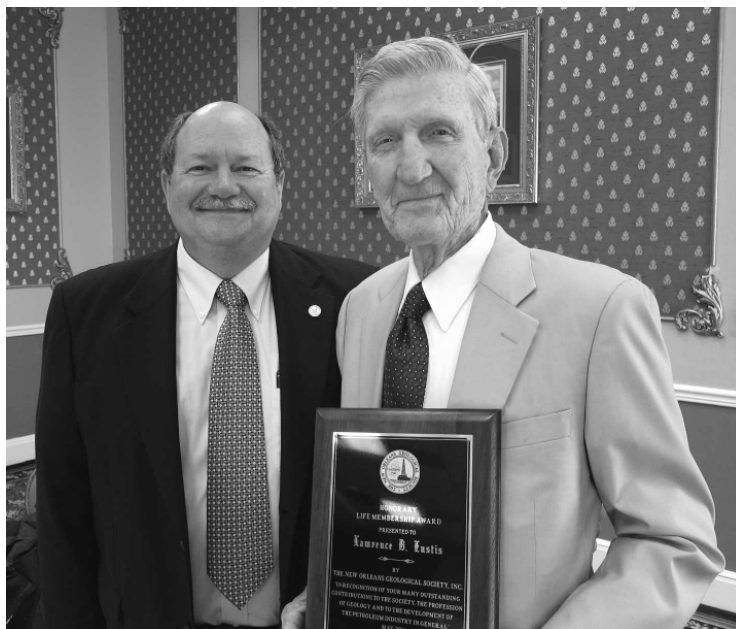
Born and raised in New Jersey, **Tim Bennett** worked as a DJ and in a multitude of kitchens and dining rooms of resort America (and highly recommends Anthony Bourdain's *Kitchen Confidential*), to pay for college and graduate school. Switching from Business Management to Geology, much to the chagrin of dear ole Dad, Tim has worked for UNOCAL, Fife Oil and Orbit Energy since receiving his degree.

THE LUNCHEON RESERVATION DEADLINE IS JULY 6 - CONTACT THE NOGS OFFICE

“And Looking Ahead...”

The next luncheon will be August 1. Guest speaker David Garner, Shell Exploration & Production Co. in New Orleans, will present: Integrating Technologies to Unlock New Volumes in a Mature Deepwater Gulf of Mexico Field.” Contact the NOGS office at 561-8980 or use the PayPal link on the NOGS website (www.nogs.org) to make your reservation.

Past President's Luncheon



NOGS President Rick Kear presents the Honorary Lifetime Membership Award to Larry Eustis, a NOGS member since its inception in 1941

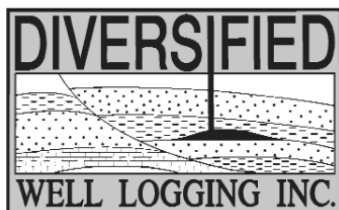


Seated: Rick Kear (2010-11), Edward Picou (1992-93), Carlo Christina (1988-89), Lawrence Eustis (2011 Hon Lifetime Mbr), Don Andrews (1963-64), William Hintze (1965-66), George Severson (1972-73), Paul Jurik (1993-94). Standing: Robert Branson (1990-91), Art Johnson (2007-08), Irion Bordelon (1998-99), Jack Bryant (2002 Hon Lifetime Mbr), Michael Fein (2006-07), Alfred Baker (1996-97), William Whiting (2008-09), Charles Corona (1981-82), M. Robert Douglass (1987-88), Rudolf Siegert (1977-78), Duncan Goldthwaite (1982-83), Tom Klekamp (2009-10). Present at luncheon but not in photo: Brenda Reilly (2004-05).



Relax. We'll keep you posted.

Your rig is offshore and you are not. How do you know what's going on so many miles away? You know because we tell you. Daily or even hourly, Diversified Well Logging's engineers update you on the status of your rig. We are your eyes and ears, especially when it comes to deep water or high pressure, high temperature areas. Diversified offers 24-hour surface evaluation. We provide secure and customized real-time data communication, in-house research and development and 24/7 on-call support for our equipment and our engineers. Whether you have a 10-day job or 110-day job, we provide the specialized attention you require. So, relax. We're with you every step of the way.



Serving the Gulf Coast for over 40 years.

New Orleans • Lafayette • Houston • Dallas • Corpus

800.280.2096

711 West 10th Street • Reserve, LA 70084 • Phone: 985.536.4143 • Fax: 985.536.2427
sales@dwl-usa.com

Field Trips

Duncan Goldthwaite

Field Trips: Have they gone out of style?

With no towering cliffs or spectacular canyons available locally, one might not think of the New Orleans area as field trip country. Yet outcrops, some classic, are many, the fossil picking can be great, and topographic features memorable. And, in places where the terrain is subtle, visiting an area with a knowledgeable guide who can point out salient features that the uninitiated might miss, can be rewarding.

Most of our past field trips have been overnight affairs by bus, but some local ones have been among our best. A visit to the Mud Lumps at Southwest Pass, near the mouth of the Mississippi River, has been very popular. This requires the use of a crew boat, which in the past has been supplied by either a producing company or a contractor, but could probably be arranged again with enough interest.

Ship Island, accessible by ferry from Gulfport or Biloxi, or Chandeleur and Cat Islands, reached by small boats, gives great views of Gulf Coast shoreline marine processes.

Further afield, the Gulf Coast is ringed by Eocene, Oligocene and Miocene outcrops, which make for rewarding visits. To the east, southwest Alabama offers great outcrops. Little Stave Creek has classic Eocene through Oligocene exposures as does St. Stevens Quarry, north of Mobile.

More directly to our north, a trip to the Eocene Moody's Branch, in the city of Jackson, Mississippi (visited and sampled by Charles Lyell in the 1850's), can be combined with seeing the Oligocene Vicksburg Limestone in Vicksburg. (Reputedly, the Vicksburg there had no end of sharks' teeth, but on one of the days we were there, only one tooth was found, which prompted our leader, Charlie Kolb, a geologist with the Corps of Engineers in Vicksburg, to suggest that it "must have been a loan shark.").

Combined with the Vicksburg Lime, one can visit the Corps of Engineers Waterways Experiment Station, observe the Vicksburg National Military Park and entrenchments (almost like new: excavating in loess can almost be permanent), see the huge Indian mound north of Natchez and return to New Orleans via the Old River Control Structure, which diverts 1/3 of the Mississippi River flow in to the Atchafalaya.

Further west, our trips have taken us to Montgomery Landing (Eocene) in Louisiana, and to the southwest, we had some great trips to Wax Lake, the Atchafalaya delta (the only area of land accretion in coastal Louisiana), and to visit shoreline features at Isle Derniers, Grand Isle and the Louisiana Marine Consortium (LUMCON) in Cocodrie.

Our Society has also had a great history of field trip leaders. Some have been our own NOGS members, but many are professors at the area universities (UNO, Tulane, LSU, Southwestern, the University of Alabama, etc.), plus geologists with the USGS, the Corps of Engineers, Minerals Management Service, industry and consulting. Getting to know these people, under the pleasant circumstances of a field trip, has been a great opportunity to develop long term friendships and professional relations.





From ZNodal Systems to ZNodal Imaging

We are full spectrum ZNodal™ technology

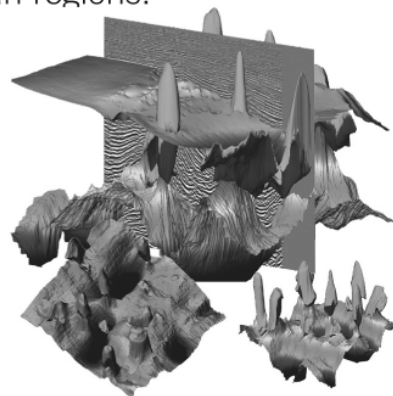
FairfieldNodal.com



We admit it. We're seismic nodal fanatics. Always have been. Which explains our one-of-a-kind, cable-free ZNodal™ systems. They work wonders in dense urban areas and pristine wilderness, in shallow water and deep ocean regions.

In fact, our exclusive ZNodal technology is behind everything we do, from acquisition and licensing to advanced processing and imaging, bringing nodal data to life in amazing ways.

Right now, our ZNodal systems are on the job in some of the world's most challenging fields, making a powerful difference. So when you're ready to go nodal, count on us to lead the way. ZNodal technology: It's what you need. It's what we're all about.



fairfieldnodal

SYSTEMS ACQUISITION LICENSING PROCESSING IMAGING



THE MARKET LEADER FOR
UNCONVENTIONAL INTERPRETATION *INTRODUCES*

NEXT GENERATION FIELD DEVELOPMENT

PLAN

Well Path Planning

OPTIMIZE

**Microseismic
Fracture Analysis**

DRILL

**Real-Time
Geosteering**

LEARN MORE AT SEISMICMICRO.COM/SMT/DEVELOPMENT

Ayla Miller

Ben Franklin High School and New Orleans Center for the Creative Arts

The New Orleans Geological Society recognized Ayla for her unique science fair project this past March at the Greater New Orleans Regional Science and Engineering Fair, held at University of New Orleans. Ayla's project was "The Effect of Kiln-firing on the Percent Water Absorption of Mud-dauber (*Sceliphron caementarium* and *Trypoxylon politum*) Wasp Nests."

In addition to the NOGS recognition, her project garnered First Place in Earth Science category at Ben Franklin High School and First Place in Earth and Planetary Science at the Greater New Orleans Regional Science and Engineering Fair. Ayla was similarly recognized by the Association of Women Geoscientists. In March, she placed second in Earth and Planetary Science at the Louisiana Science and Engineering Fair.

Ayla spends a 1/2-day at Ben Franklin High School where her science teacher is Clare Davis-Wheeling; the second half of her day, she studies at New Orleans Center for the Creative Arts. Despite her science project suggesting her future lies as a geoscientist, she is equally adept in the arts, music and dance! She has performed on stage with the New Orleans Opera Association chorus including performances of La Boheme, Das Rheingold, Cavalleria Rusticana, and Pagliacci. Ayla has also sung in the chorus with the Tulane Little Lyric Theatre and performed at the Kid's Tent at the New Orleans Jazz and Heritage Festival. She is talented in violin, voice and piano and is a composer as well.

Mike Fein



Ayla Miller, winner of Annual NOGS Science Fair Award at the Greater New Orleans Science and Engineering Fair



Amasa Miller and Anita Cook along with Mike Fein, Chairman of the NOGS Science Fair Committee

**New NOGS
Members
March -
May 2011**

Joshua P. Garland
Coord. Corporate Relations
LSU Dept of Geol/Geophysics
Howe Russell Hall E 256
Baton Rouge, LA 70803
225-578-3426

Jordan O. Heltz
Chevron
100 Northpark Blvd
Covington, LA 70433
985-773-7163

Francis P. Richard Jr.
W & T Offshore
Staff Reserve Engr.
Ste 1100 - 1100 Poydras St
New Orleans, LA 70163
504-210-8107

Alexander G. Webb
LSU Faculty
Dept. of Geology/Geophysics
E 235 Howe-Russell
Baton Rouge, LA 70803

Layne E. Williams
Seismic Exchange Inc
N.O. Regional Marketing Mgr
Ste 4300 - 201 St. Charles Ave
New Orleans, LA 70170
504-581-7153

Kelly A. Williams
Student-Tulane
105 Lori Ct
Luling, LA 70070
504-473-3338

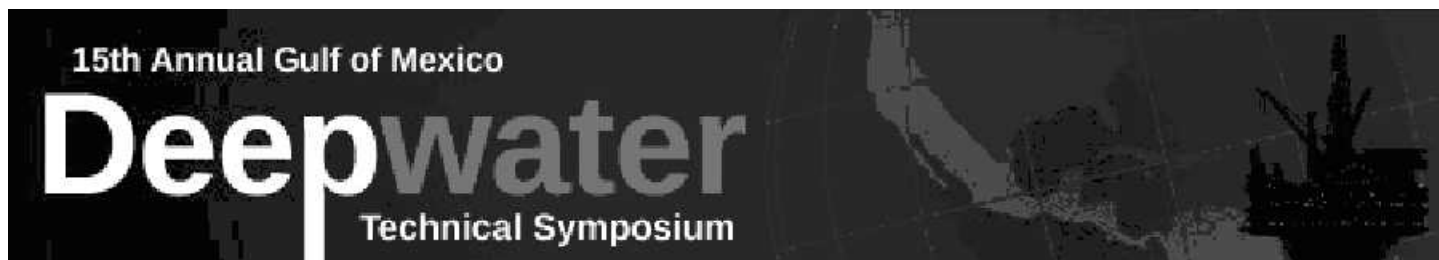
Alexander C. Yoder
BOEMRE
Geologist
1201 Elmwood Park Blvd
New Orleans, LA 70123
504-736-2638

REINSTATED

Timothy K. Moran
Seismic Exchange Inc
Vice President New Ventures
Ste 4300 - 201 St. Charles Ave
New Orleans, LA 70170

REINSTATED

Robert C. Shoup
Consultant
#4543 - 4001 Fannin
Houston, TX 77004
713-529-8460



August 11 & 12, 2011 - New Orleans

deepwaternola.org

The 15th Annual Gulf of Mexico Deepwater Technical Symposium will be held at **Hilton New Orleans Riverside**

Presentations & Speakers

We have a great list of speakers this year with over 50 presentations spread over the following Deepwater categories, Geoscience, Drilling, Completion, Reservoir Engineering, Production Systems, Emerging Technology, HSE & Regulatory, Pipelines and Student focused presentations. You can view the current speaker line-up on the website for each of the categories. www.deepwaternola.org

Keynote Speakers

The Keynote speakers and panel discussion participants are also set. William Reilly, former head of the EPA and Chairman of the Presidential Oil Spill Commission will be the Keynote Speaker on Day 1. Mr. Reilly will recap the commission findings and has been asked to address the commission findings covering the systemic issues in our industry. On Day 2, Lars Herbst GOM Director of the BOEMRE will discuss BOEMRE challenges going forward as the agency splits into the BOEM (Bureau of Ocean Energy Management) and BSEE (Bureau of Safety and Environmental Enforcement).

Industry Leaders/Panel Discussion

The closing event for this year's symposium will be a panel discussion among industry leaders covering well activity and incident response in a post Macondo world. Initial presentations/discussion will cover well design and blow out response issues for deepwater subsea wells as well as deepwater platform wells. Tim Achee (Chevron) will cover well design & blowout response issues specific to Subsea BOP Stack wells while Joe Leimkuhler (Shell) will cover similar well design & response issues specific to Deepwater Floating platforms using surface BOP stacks. Charlie Miller - Chief Technology Officer for the MWCC will cover the issues related to Cap & Contain from the wellhead up. Tim Sargent - Noble Energy - has been asked to cover the subsurface Geological issues related to WCD (Worst Case Discharge rates) - and any Helix Consortium Group Issues. Our final panelist, Coast Guard Rear Admiral Nash, will cover the high level incident response learnings from a Macondo type incident from a unified command perspective. The goal of the panel is to provide a comprehensive overview from well design to cap and contain to spill response for Deepwater well operations in a post Macondo world and allow the Q&A session with the symposium attendees to fill in any gaps. Don't miss the final session. It promises to be one of the highlights of the symposium.

Technical Sessions

The technical sessions will include around 30 presentations covering a wide array of topics covering:

Reservoir / Economics – Geoscience - Student Papers - Drilling Technology - Completion / Interventions - Pipelines / Infrastructure - Production Systems - Emerging Technology - HS&E / Regulatory

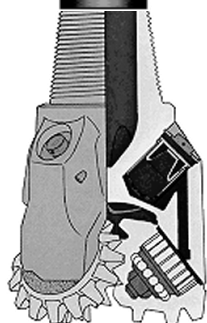
Registration before July 1, 2011 - \$250 for members of SPE, AADE and NOGS - \$300 for Non-members

Registration after July 1, 2011 - \$300 for members of SPE, AADE and NOGS - \$350 for Non-members

Registration for Students - FREE

Gala tickets purchased individually or added to registration - \$50

Register today online at: www.deepwaternola.org



South Louisiana and Offshore Gulf of Mexico Exploration and Production Activities

By Carlo C. Christina

LAFAYETTE DISTRICT, ONSHORE AREA

The Tuscaloosa play in the Florida Parishes continues to attract attention with 2 new locations within the past 3 weeks. *The Oil & Gas Journal*, in its May 16th edition, reported, "Several operators have amassed large land positions in Louisiana and are preparing to target oil in the Tuscaloosa Marine Shale (TMS), stratigraphic equivalent of the South Texas Eagle Ford shale." The article cited the Basin Research Institute's report, co-authored by Chacko John, that the formation could contain several billion barrels of recoverable oil. The *Journal* also stated that Indigo II Louisiana Operating LLC has accumulated more than 240,000 net acres of leasehold and mineral-fee land in central Louisiana that it believes prospective in the TMS, a position nearly equal to that of Devon Energy Corp., which holds 250,000 net acres. It is rumored that 2 new players are now active in the play, namely Encana and Goodrich.

Since my last report, 35 new permits to drill have been approved in the Lafayette District. Following are listed the most significant of these new locations:

NEW LOCATIONS

In Avoyelles Parish (A), Anadarko E & P will drill the #1 Dominique in **North Bayou Jack** in Sec. 27, T2S-R4E. It will be drilled to 23,200 feet (243229).

Midstates will drill the #1 AKS Properties in Beauregard Parish (B), in **Bear Field**. The well is located in Sec. 28 T6S- R9W and is projected to a total depth of 13,000 feet (243287).

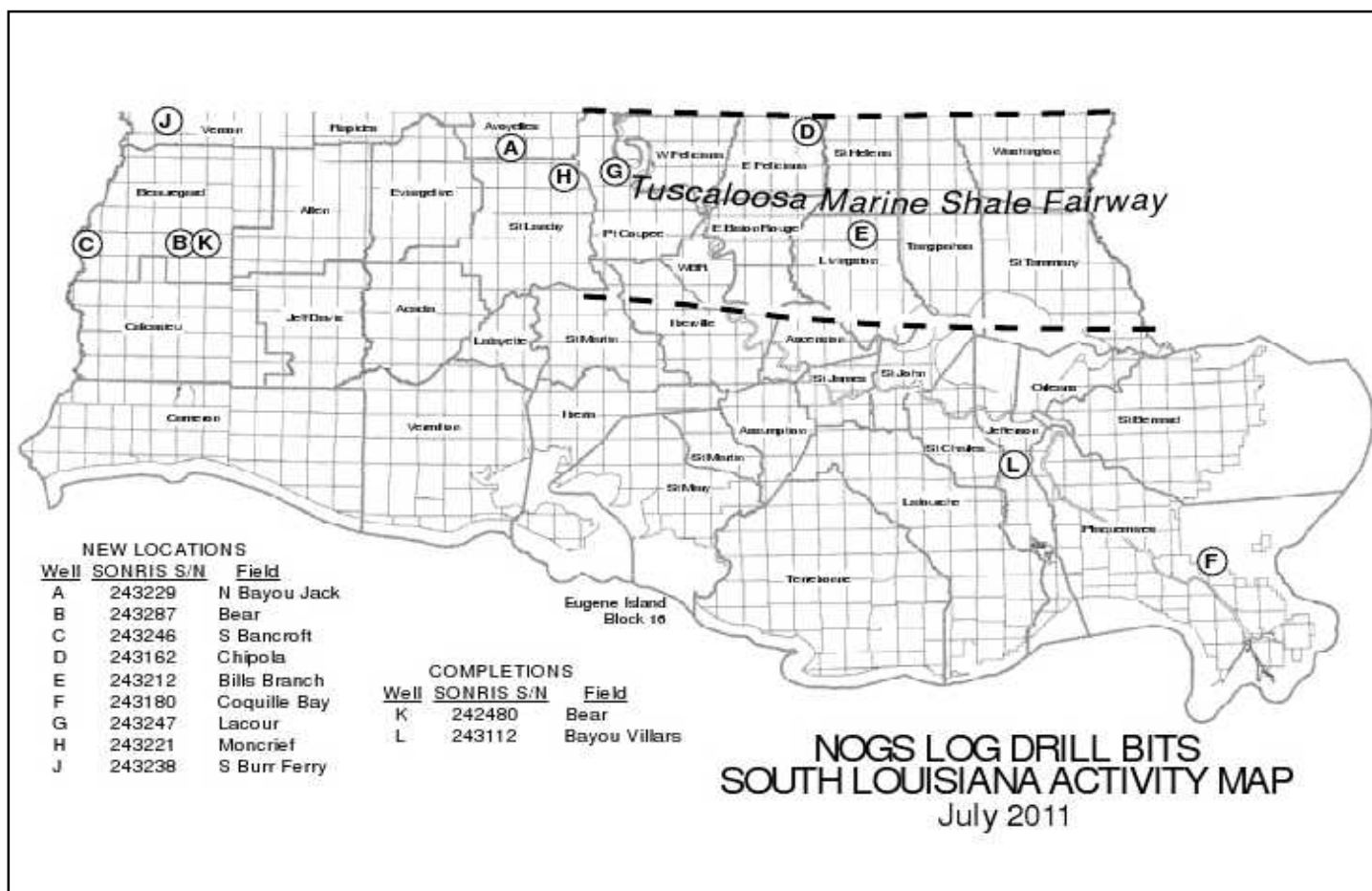
Also in Beauregard Parish, (C), El Paso will drill the #1 Columbia Land in **South Bancroft Field** to a proposed total depth of 15,000 feet. The well is located in Sec. 27 T6S-R13W (243246). The field was discovered in 1948 and was drilled and produced from the Cockfield Sands during the 1970s and 1980s, with the latest well drilled in 1987, a dry hole at 8802 feet. This 15,000-foot test is important and will evaluate deep Wilcox sands in area.

Trek Resources Inc. has staked a location in **Chipola Field**, East Feliciana Parish (D). The #1 Hurst is located in Sec. 56, T1S-R3E and is projected to a proposed depth of 13,000 feet (243162). It will be drilled to test the Tuscaloosa Sands.

In Livingston Parish (E), Yuma E & P Co. will drill the #1 Weyerhaeuser in **Bills Branch Field** in Sec. 19, T5S-R5E to a total depth of 15,500 feet (243212).

Clayton Williams is drilling the #1 SL 19706 in **Coquille Bay Field**, Plaquemines Parish, (F), from a surface location in Main Pass Block 49. The well is drilling below 2500 feet to a projected depth of 11,700 feet (243180).

In Pointe Coupee Parish (G), Anadarko will drill the #1 Lacour in **Lacour Field**, located in Sec. 43, T3S-R8E to a projected depth of 22,000 feet, in a 7,000 foot lateral leg (243247). Lacour Field was discovered in 1994 and was completed in the Austin Chalk through



perforations 14,750 to 22,364 feet and tested 1654 BOPD and 734 MCF gas. Within 20 months, production declined to less than 30 barrels per day, and the field has been off production since 2002, with cumulative production of 86,702 barrels. It will be interesting to learn if new fracing methods can establish commercial production.

Atinum Operating will drill an Austin Chalk well in **Moncrief Field**, St. Landry Parish (H) in Sec. 20, T3S-R6E. The #1 Briggs is projected to a depth of 21,254 feet in a lateral hole (243221).

In Vernon Parish (J), Swift Energy will drill the #1 GARS in **South Burr Field**, a 19,699 foot directional hole in Sec. 20, 1S-10W (243238).

In Avoyelles Parish (A), Anadarko E & P will drill the #1 Dominique in North Bayou Jack in Sec. 27, T2S-R4E. It will be drilled to 23,200 feet as an Austin Chalk lateral (243229).

COMPLETIONS

In Beauregard Parish (K), Midstates Petro completed its #1 AKS 29 in **Bear Field**, located in Sec. 29, T6S-R9W as an oil well in the Middle Wilcox Reservoir. It was completed, flowing 75 BOPD and 100 MCFG through perforations 11,390 to 11,472 feet overall (242480).

Manti Exploration has plugged and abandoned the #1 SL 20413 in Jefferson Parish, (L), in Bayou Villars **Field**. The well was drilled in Sec. 20 T15S-23E, to 10,100 feet and was plugged on 5/13/2011 (243112).

--- continued on next page ---

OFFSHORE GULF OF MEXICO SHELF ACTIVITIES

By Al Baker

Between May 6th and May 25th, the BOEMRE issued thirty-eight drilling permits. Four permits were for new wells of which one is exploratory and three are development. The exploratory well permit is for Apache Corporation's Main Pass Block 315 #2 well. The development well permits were issued to Arena Offshore for the East Cameron Block 328 #C-1 and #C-5 and Walter Oil & Gas Corporation for Ship Shoal 189 #D-1.

According to ODS-Petrodata, as of May 20th in the U.S. Gulf of Mexico, there were 68 rigs under contract out of the 123 available, which translates to a 55.3% utilization rate. The Baker Hughes Rig Counts on May 20th indicated that there were 31 active rigs compared to 49 active rigs during the same time last year. This represents a 36.7% decrease in the active rig fleet on a year-to-year basis.

The BOEMRE held public meetings in Houston on May 17th and in New Orleans on May 19th to address the draft supplemental environmental impact statement (SEIS) for the proposed oil and gas Lease Sale 218 in the Western Planning Area in the Gulf of Mexico. This SEIS draft updates the findings in several previously published EISs covering the Gulf of Mexico as well as new analyses using the latest available information following the Deepwater Horizon explosion and spill. The public comment period currently extends until June 6, 2011 prior to the BOEMRE issuing the final draft. According to the BOEMRE website, OCS Sale 218 is tentatively scheduled for late 2011 or early 2012.

On May 13th, Energy XXI (Bermuda) Ltd. provided an operational update on its exploration and development activity on the Gulf of Mexico shelf. At Main Pass 72 Field, they reached total depth of 8,350 feet on their Ashton Prospect. The well encountered seven pay zones. The rig is currently being moved to begin drilling their Onyx Prospect, after which it will be re-located back onto the Ashton Prospect for completion operations. At South Pass 89 Field, a rig has been moved onsite to commence a six-well recompletion program from their South Pass 93 "A" Platform.

Within the shallow-water, ultra-deep shelf program, Energy XXI's McMoRan-operated partnership has current drilling activity that includes the Blackbeard East and Lafitte exploratory wells and the offset appraisal well at Davy Jones. Blackbeard East, located on South Timbalier Block 144, has been drilled to 32,559 feet where McMoRan continues to make progress resolving mechanical problems in the well. McMoRan well intends to deepen pending the resolution of the mechanical issues. On Eugene Island Block 223, the Lafitte well is currently drilling below 22,000 feet towards a proposed total depth of 29,950 feet. This well targets Middle and Lower Miocene objectives and possibly Oligocene (Frio) beneath a salt weld feature. The Davy Jones offset (#2) well, situated on South Marsh Island Block 234, has been drilled to 30,450 feet and logging operations are underway to evaluate exploratory objectives in the Cretaceous section below previously identified Wilcox pay sands.

On May 23rd, Leed Petroleum PLC announced the sale of its Gulf of Mexico oil and gas assets to Marlin Energy LLC for \$16,000,000. Marlin Energy LLC is a private oil and gas operations company based in Lafayette, Louisiana.

In addition, Gulfsands Petroleum is attempting to sell a portfolio of non-operated oil and gas properties located in the shallow shelf region, offshore Texas and Louisiana. The assets comprise 34 leases containing twenty producing fields. Working interests in the properties range from 3% to 52%. The associated PV10 value of the assets is estimated at \$35,172,800.

NeuraSection

"Works the way a geologist thinks"

Quickly see the whole geological picture with NeuraSection. This intuitive package puts you back in control of your work. See why geologists everywhere are switching to NeuraSection.



- Advanced log correlation
- Interactive cross sections
- Automated geological contouring
- Interactive map editing
- Presentation montaging

For more information:
visit www.NeuraSection.com
call 1.281.240.2525

Neuralog
Turning Paper Into Petroleum

© 2011 Neuralog, Inc. • www.neuralog.com • 1.281.240.2525 • 1.800.364.8728

SEI®

Seismic Exchange, Inc.

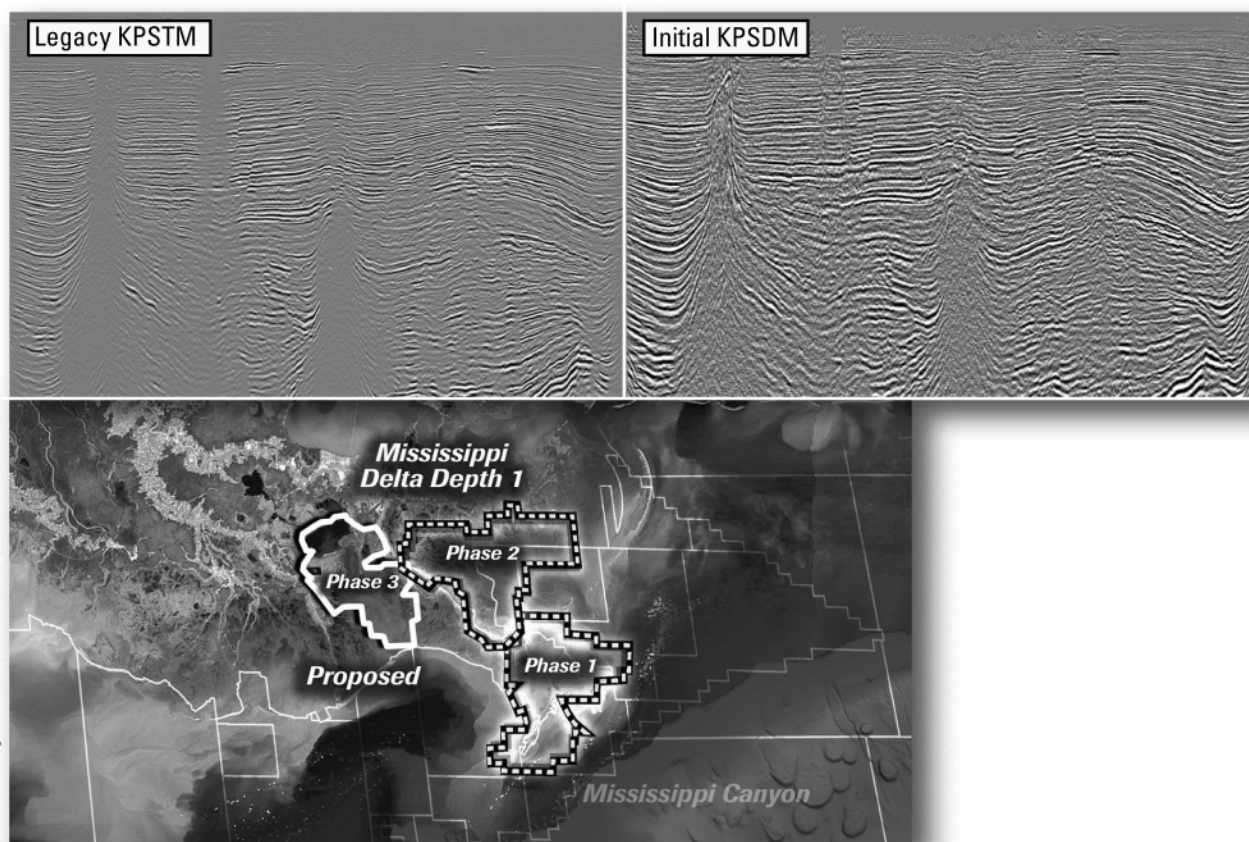
**Strategic Speculative Surveys
Geophysical Data Marketing & Management**

YOUR
**Full Service
National
Seismic Data
Marketing Firm**

New Orleans
Dallas
Houston
Denver
Oklahoma City
Corpus Christi
Tulsa

201 St. Charles Avenue, Suite 4300, New Orleans, Louisiana 70170-4300
Telephone 504.581.7153 Fax 504.581.9591
www.seismicexchange.com

Improved depth imaging in the Mississippi Delta



In the Mississippi Delta region, WesternGeco is utilizing state-of-the-art processing designed to eliminate fault shadows and enhance deep imaging. The Mississippi Delta - Depth 1 survey, now in progress, incorporates the processing and remigration of twelve legacy surveys covering 1,855 square miles. High-quality time imaging using relative amplitude anisotropic Kirchhoff prestack time migration will be followed by improved structural imaging utilizing anisotropic Kirchhoff prestack depth migration.

To learn more about this and other Multiclient products, call +1 713 689 1000.

www.multiclient.westerngeco.com/la

Multiclient to the Power of E



“European Shale Gas,” *The Oil and Gas Journal* (www.ogj.com/index/exploration-and-development):

Shale gas has been a dominant force for U.S. energy markets. Following an estimated \$250 billion of investment, 23% of US gas production now comes from reservoirs several thousand feet underground. Is Europe going to see a similar shale gas overhaul?

Meanwhile, shale gas faces opposition from environmentalists who fear the extraction process could damage water supply. These fears are similar to the current Marcellus Shale boom in the East. France is close to banning activity, despite having substantial potential reserves. Production costs could be as high as \$16.2 per thousand cubic feet (mcf), according to OIES. Existing gas imports from Russia and Africa cost between \$3 and \$6 per mcf, while US shale gas production costs are around \$3 per mcf.

Clearly, the outlook for shale gas would improve if gas prices rise. According to National Public Radio, the German government has decided to close all the country’s nuclear power stations by 2022. The decision marks a major change for German Chancellor Angela Merkel, who only last year forced through legislation that would have extended the working life of the power plants. Anti-nuclear feeling has grown in Germany following the Fukushima nuclear disaster in Japan. Does this open the door for future natural gas growth?

“Weathering The Storm: Above-Normal Hurricane Season Predicted,” *Rigzone* (www.rigzone.com)

Jaime Kammerzell argues that, though hurricane predictions vary depending on the source, four forecasts for the 2011 hurricane season, which runs from June 1 through November 30, agree that there will be an above normal number of hurricanes in the Atlantic this year.

According to an April 2011 report from Colorado State University, there will be 16 named storms, with 9 hurricanes, of which 5 will be major (Category 3-5). However, AccuWeather.com meteorologist Paul Pastelok believes that there will be 15 named tropical storms this season, with 8 hurricanes, 3 of which will be major. Likewise, Weather Service International predicts 15 named storms with 8 hurricanes, but forecasts that four of the hurricanes will be major. The National Oceanic and Atmospheric Administration (NOAA) just released its prediction on May 19th. According to the NOAA, the US will see 12 to 18 named storms, with 6 to 10 hurricanes, of which 3 to 6 will be major.

Hurricane forecasters are quick to point out that they only predict the number of named storms, not the path of the storm or where it will make landfall. Depending on the hurricanes paths, 97 rigs working in the Gulf of Mexico from June 1 through Nov. 30, 2011 could be in harm’s way. Fifty-one jackups, 29 semisubmersibles, and 17 drillships will be working for 36 different operators in the GOM. Chevron leads the pack with 15 contracts, followed by Shell with nine, BP with eight, and Shell and Arena with seven each.

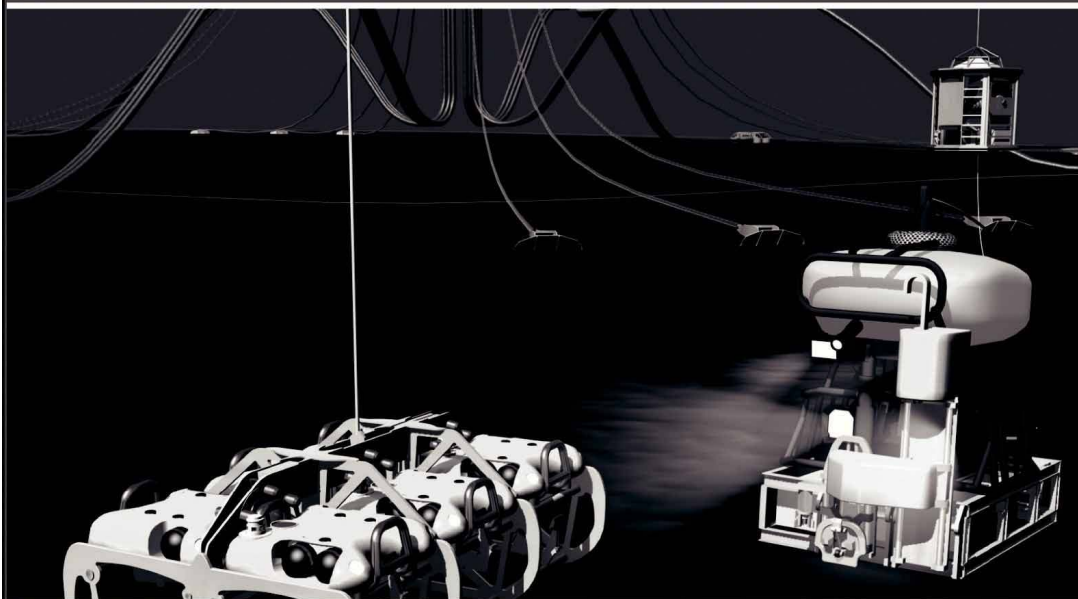
Rigzone – Noble Energy Press Release

Noble Energy (2011) has discovered oil in the Santiago prospect in the deepwater Gulf of Mexico. The well, located in 6,500 feet (1,981 meters) of water on Mississippi Canyon Block 519, was drilled to a total depth of 18,920 feet (5,767 meters) by the ENSCO 8501 semisub. Noble said that open-hole logging identified nearly 60 feet (18 meters) of oil pay in a high-quality Miocene reservoir. Santiago is the third discovery in Noble’s Galapagos project, in addition to the prior successes at Santa Cruz and Isabela.

Total gross resources discovered in the larger Galapagos project, including the Santiago well, are estimated by Noble Energy to be 130 MMboe, of which 75% of the discovered resources are oil. The company is moving forward with the Galapagos development and expects for all three wells to be online in early 2012.

Currently, Noble is completing operations at Santiago, and once completed, the company will return to the Deep Blue prospect and resume drilling operations. Following Deep Blue, the Company plans to spud an appraisal well at the Gunflint discovery (Mississippi Canyon 948).

Finally - An answer for getting reservoir seismic **OVER THE RESERVOIR!**



- 4C/4D Node Seismic
- ANGOLA
- GoM
- NIGERIA



"Coming Soon to an Oilfield Near You!"

www.sbexp.com

Dubai
T: +971 4 4271700

Houston
T: +1 281 566 1666

Oslo
T: +47 2240 2700

Rio
T: +55 21 2494-0283

Singapore
T: +65 9180 2605

Trondheim
T: +47 7 3879500

RAISING
THE **STANDARD**



100 Northpark Blvd.
Covington, LA 70433

(985) 773-6000



LaBay
Exploration Co., L.L.C.

111 Veterans Memorial Blvd.,
Suite 1560
Metairie, Louisiana 70005

www.labayexploration.com

Office (504) 371-5967
Fax (504) 371-5969

For Gravity and Magnetic Data **Count on Fugro...**

Brenda Robinson: + 1 713-369-6072

brobinson@fugro.com

Jeff Rowe: + 1 613-520-7713

jrowe@fugro.com

www.fugro-gravmag.com



*This advertising
space is available!
Contact the
NOGS office.*

THE NEW ORLEANS GEOLOGICAL SOCIETY MEMORIAL FOUNDATION, INC.

The Memorial Foundation is an IRS Tax Exempt Code #501 (c)(3) organization. The Federal I.D. is: 72-1220999. Please consider making a donation to the Foundation prior to the close of this year's fiscal cycle on June 30, 2012. Your individual support in any amount will help meet the IRS Guidelines for our Foundation. *Thanks!*

\$15,000 AND ABOVE

Olga Braunstein Succession Gibbet Hill Foundation

*In Memory of Steve & Marion Millendorf, William J. Prutzman,
Roger G. Vincent & Ron Youngblood*

\$10,000

George W. Schneider, Jr. and Family
*In Memory of George W. Schneider, Sr.
GCAGS*
Matching funds

\$7,000 TO \$9,000

Paul C. McWilliams

\$2,000 TO \$3,000

NOGS Golf Tournament May 2011
In Memory of Bill Craig

\$250 TO \$499

Burton C. Bowen
In Memory of Joffre J. Crouere
Marc Cooper
Through the Marathon Oil Co MEPAC Program

Carlo C. Christina
In Memory of Al Gilreath
Tom Klekamp
Richard G. Klibert

UP TO \$249

Woods W. Allen, Jr.
In Memory of William C. Ward
Donald I. Andrews
In Memory of Ray F. Havard
*In Memory of Harlan (Lanny)
Northcott*
Robert J. Ardell
In Memory of Al Gilreath
In Memory of Bill Malin
In Memory of Bob Williamson
Mr. and Mrs. Wesley Barton
In Memory of Thomas A. Cullinan
Abraham Biadgelgne
Maurice N. Birdwell
In Memory of Uno Nummela
Irion Bordelon, Sr.
In Memory of Robert G. Williamson
Hilary James Brook
Robin Broussard
Rob Burnett
J. Sybil Callaway
Chevron
Matching Funds
Arthur F. Christensen
Ellen F. Clark
James S. Classen
In Memory of Robert C. Treadwell
In Memory of Robert G. Williamson
Willis E. Conatser PhD
Clarence F. Conrad
Charley Corona
*In Memory of Professor Hubert
Skinner*
Trudy and Charley Corona
In Memory of Erik Mason
Michael A. Danahy
Robert M. Danos
In Memory of Max H. Durham
M. R. "Bob" Douglass
In Memory of Robert G. Williamson
Merle J. Duplantis
Dr. Brooks B. Ellwood

Parrish N. Erwin, Jr.
Exxon Mobil Matching Funds
Michael N. Fein
Laurens Gaarenstroom
Sherwood M. Gagliano
Arthur J. Garden
David Garner
Larry Galloway
Peter G. Gray
In Memory of Robert G. Williamson
Bret Hampton
Angela M. Hessler
*Through the Chevron Humankind
Program*
Bernard L. Hill, Jr.
Dan E. Hudson
Kenneth Huffman
Jeffrey E. Jandegian
Paul Jurik
In Memory of Thomas A. Cullinan
Reuben J. Klibert, Jr.
In Memory of Dale Klibert
John C. Kucewicz, Jr.
John C. Langford
H. David Lynch
Jeannie F. Mallick
George M. Markey, Jr.
Margaret M. McKinney
Paul C. McWilliams
*In Memory of Russell D. "Rusty"
Morris*
Robert G. Murphy
In Memory of Ron Youngblood
In Memory of Thomas A. Cullinan
New Orleans Geological Auxiliary
In memory of Beverly Langford
In Memory of Dee Baysinger
In Memory of Doris Meltzer
In Memory of Terri Smith
In Memory of Robert G. Williamson
Nexen Petroleum USA Inc.
Matching Funds

FONO FUND

The FONO Fund accepts contributions that are invested and the income dedicated to assure sufficient financial resources will always be available to maintain the NOGS business office. Contributors are reminded that donations to the FONO Fund are not covered by the IRS 501 (c)(3) tax exempt classification and should be reported as a business expense on your IRS tax report.

\$500

James A. Hartman
In Memory of Hal Hudson
In Memory of Robert G. Williamson

UP TO \$250

Donald I. Andrews
Alfred H. Baker Jr.
David E. Balcer
Joseph E. Boudreaux
Hillary James Brook
Jack G. Bryant
J. Sybil Callaway
Arthur F. Christensen
Richard P. Colomes
Clarence F. Conrad
Michael A. Danahy
John Dombrowski
Merle J. Duplantis
Richard A. Edmund
Mark J. Gallagher
William J. Furlong
Duncan Goldthwaite
James A. Hartman
In Memory of Hal Hudson
*In Memory of Robert G.
Williamson*
Bernard L. Hill, Jr.
Thomas A. Hudson
Kenneth Huffman
C. M. (Max) Jacobs
Robert M. Jemison, Jr.
Arthur H. Johnson
Tom Klekamp
Russell J. Landry

Louis Lemarie'
H. David Lynch
William J. Malin
Jeannie F. Mallick
George M. Markey, Jr.
James A. McCarty
Louis L. McCormick
Margaret M. McKinney
Robert G. Murphy
William J. O'Leary
Richard A. Olsen
Erwin Parrish, Jr.
Linda and Bill. Peirce
Edward B. Picou, Jr.
Richard D. Provensal
James P. Raymond, Jr.
Brenda E. Reilly
C. R. Rondeau
George D. Severson
Rudolf B. Siegert
Richard J. Stancliffe
Bryan P. Stephens
Raymond Stephens
Roy C. Walther
Robert C. Weissmann
William M. Whiting
James W. Yeldell, Jr.
Jim Zotkiewicz

CONTRIBUTIONS FOR BOTH FUNDS THROUGH JUNE 3, 2011.
DONATIONS ARE LISTED FOR ONE YEAR.

Russell H. Nordwell
William J. O'Leary
Richard A. Olsen
In Memory of Richard W. Boebel
In Memory of William J. Malin
In Memory of Robert W. Sabate'
Teresa M. O'Neill
In Memory of Brian J. O'Neill
Linda and Bill Peirce
Edward B. Picou Jr.
In Memory of William J. Malin
In Memory of Robert G. Williamson
Richard D. Provensal
In Memory of Thomas H. Philpott
Scott Purinton
Brenda E. Reilly
Mrs. William B. Rodan
In Memory of Robert G. Williamson

Robert T. Sellars, Jr.
*In Memory of Robert G.
Williamson*
George D. Severson
Rudolph B. Siegert
Dr. J. O. Snowden
James M. Sothern
Gary L. Spraul
In Memory of H. Grady Collier
Raymond O. Steinhoff
*In Memory of Professor Hubert
C. Skinner*
In Memory of Harold E. Vokes
Betsy M. Strachan Suppes
In Memory of Hubert Skinner

---continued
on page 26---

SAI

Geoconsulting, Inc.
Geological and Geophysical Consulting,
3-D Seismic Interpretation

Ben D. Sydboten, Jr. CPG

124 Heymann Blvd., Suite 202

Lafayette, LA 70503

www.saigeoconsulting.com

Office (337) 234-5288

Cell (337) 234-5491

ATWATER CONSULTANTS, LTD.

REGISTERED AND CERTIFIED PETROLEUM PROFESSIONALS

GEOLOGICAL, ENGINEERING, GEOPHYSICAL,
TRAINING AND EXPERT WITNESS SERVICES

3525 Hessmer Ave, Ste 304

Metairie LA 70002

Tel. (504) 581-6527

Fax (504) 524-7798

"Serving The Oil & Gas Industry Since 1983"

Geological,
Geophysical &
Land Drafting



Anthony Catalanotto
President

Stefani Foster
Drafting & Design

Geo-Draft, Inc.

A Professional Drafting & Graphics Firm

3349 Ridgeway Drive • Suite 202 • Metairie, LA • 70002

Office: (504) 836-2882 Fax: (504) 836-2877 (Cell) (504) 481-7291

E-Mail: geodraft@bellsouth.net

Website: www.geodraftinc.com

**NOGS thanks our
sponsors for their support:**

GOLD LEVEL SPONSORS:

CHEVRON

LA BAY EXPLORATION CO, LLC.

**SPECIAL THANKS TO
DIVERSIFIED WELL LOGGING**

NORTHCOAST OIL COMPANY

610 E. Rutland St.

Covington, LA 70433

(985) 898-3577

(985) 898-3585 FAX

Jack M. Thorson

Eric C. Broadbridge

J. Daryl Gambrell

Raymond W. Stephens

(832) 242-6000 (O)

(713) 917-0493 (O)

(504) 931-7506 (C)

johnjurasin@jurasinoilgas.com

JURASIN OIL & GAS

9700 Richmond Ave., Suite # 124

Houston, TX 77042-4821

JOHN M. JURASIN
President

Cert. Pet. Geologist #4284
Cert. Prof. Earth Scientist #1961

Collarini Energy Staffing

Full-Time and Temporary Personnel

Facilities • Drilling • Production • Reservoir Engineering
Land and Legal • Geoscience • Information Technology •
Health and Safety • Management • Supply Chain
Accounting • Administrative Support

10497 Town and Country Way, Suite 950
Houston, Texas 77024

832-251-0553

www.collarini.com



Collarini Associates

Reservoir Engineering
Oil & Gas Property Evaluation
3-D Seismic Interpretation
Integrated Field Studies

832-251-0160

504-887-7127

Houston

New Orleans

Memorial Fund, continued from page 25

Stephen Szydlak
Roy C. Walther

William M. Whiting

Arthur S. Waterman

In Memory of T. Wayne Campbell

Armour C. Winslow

In Memory of Rita Menzel Winslow

Frances A. Wiseman

In Memory of Steve Widdicombe

James W. Yeldell, Jr.
Jim Zotkiewicz

In Memory of Bill Craig

Chevron

Bernard L. Hill, Jr.

John C. Scheldt

Candace V. Strahan

In Memory of James Strahan

***This advertising space
is available! Contact
the NOGS office.***

New Orleans Geological Auxiliary News

Happy July 4th everyone! I am not sure about anyone else, but I, for one, cannot wait for winter. Just turned on my computer to receive an e-mail from Governor Jindal titled "Getting prepared for Hurricane season"! Seriously, isn't the Mississippi River flooding enough for one year. Oh well, that's life in Louisiana, I guess, but we do love it here with all the food, festivals and friends; we keep coming back for more!

Speaking of friends, get well wishes go out to Peggy Campbell and Camille Yeldell for a speedy recovery. You both are in our thoughts and prayers.

This month's lucky member is no other than our "past leader of the pack" Beverly Kastler. In 1985, largely thanks to Mary Walther, Beverly became a member. This former school Librarian has become a fierce cheerleader, mover and shaker in our NOGA community! She can and has "convinced" many of us that we should run for various positions on the Board. Even when we said "no", well, let's just say that word was not acceptable, and we did as she said. In turn, she motivated us, and in the end, we were thankful to her for believing in us as well. Beverly has served as President, 1st and 2nd Vice President, Director, Chair and Co-Chair (of many and any event you could name), Parliamentarian and various other positions. In addition with her assistance to many NOGS Socials, Beverly has worked tirelessly on three AAPG Conventions serving as Chair and Co-Chair for the Spousal Events. That in itself was a huge undertaking not many of us would choose to accept. But not Beverly, she was tenacious whether choosing the decorations, the perfect menu and acquiring volunteers; she did it all. Through health issues she persevered and got the job done. Especially this last convention, we were exhausted, but there she was, with her assistant Everett, making sure the job was done right! Beverly is a devoted wife, mother, daughter and grandmother (blessed with 3 grandsons) and a great friend. Thank you Beverly for taking care of us in addition to your family!!

Congrats to Art Johnson on his technical advice for the upcoming movie *Dallas*. If they need any actresses for the part of Sue-Ellen, let us know. We could also recommend a few J.R and Bobby fill-ins.

Our Board has worked very hard for the 2011-2012 Socials and Luncheons. More on that subject next month. Until then, have a safe and happy Summer.

Susie Baker

NOGA Application Form

Dues: \$25.00

Name _____

Home Address _____

Home phone _____

Husband's Name _____

Husband's Company _____

*Please make check payable to New Orleans Geological Auxiliary and
mail with application to:*

Judy Lemarié

2 Yosemite Dr

New Orleans LA 70131

DOMESTIC AND INTERNATIONAL
BIOSTRATIGRAPHIC SERVICES



6619 Fleur de Lis Drive
New Orleans, LA 70124
(504) 488-3711

www.paleodata.com



Complete wellsite paleo services

**Available single-source regional
biostratigraphic databases for
accuracy and consistency**

**Integrated foram / nannofossil
analyses**

**In-house sample preparation
lab for quality-monitoring
and efficiency**

**Supported Gulf Coast
biostratigraphic databases**



MCMORAN EXPLORATION CO.



**MCMORAN
OIL & GAS**

www.mcmoran.com

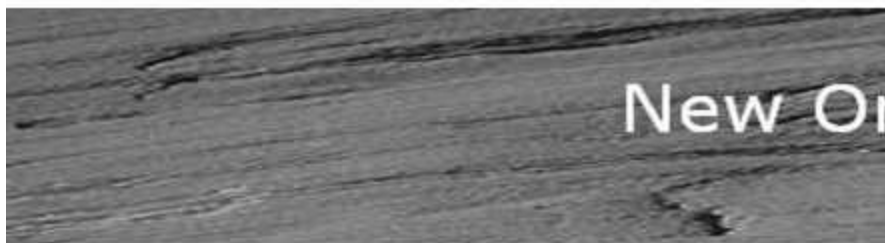
NYSE: MMR

16676 Northchase Dr.
Houston, TX 77060
(281) 539-7600
Fax: (281) 539-7655

1615 Poydras
New Orleans, LA 70112
(504) 582-4000
Fax: (504) 582-4155

110 Travis St., Suite 140
Lafayette, LA 70503
(337) 735-9150
Fax: (337) 735-9151

*It's so simple - click to
pay NOGS online
using PayPal! You can
pay your dues and
luncheon costs, even
make donations. Just
use the convenience
link on the NOGS
website homepage
(www.nogs.org)*



Stay Connected



Become a member of the NOGS.
We'll keep you informed on
news and events as they
happen.

[Join NOGS!](#)

The Latest

June 12, 2011

**NOGS NOW accepts
payments via Paypal**

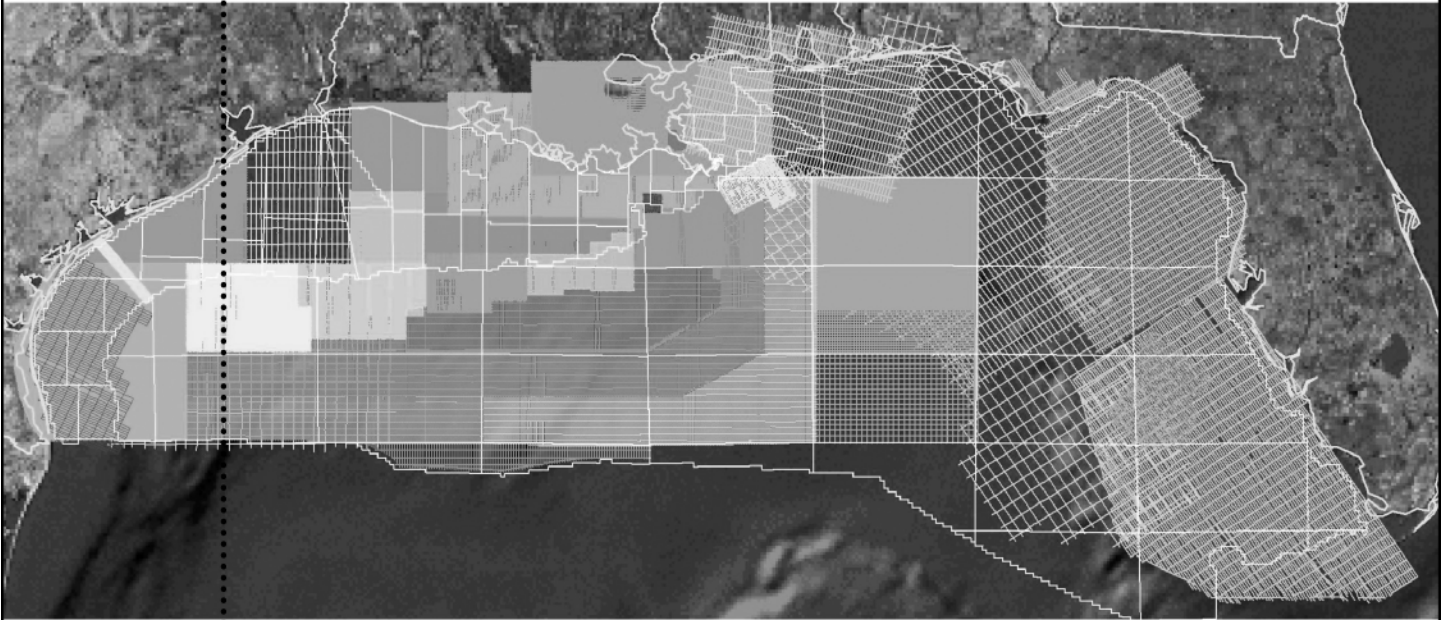
Click [here](#)

Welcome Center



Resources

For Gravity and Magnetic
Data in the Gulf of Mexico
**Count on Fugro—
Mapping Geology
to the Basement...**



...And beyond with the most comprehensive non-exclusive airborne, land and marine potential fields geophysical database, including AeroMagnetic, Marine Gravity and Bathymetry data in the Gulf of Mexico. Interpretation includes:

- Basement architecture
- Tectonic elements
- Structural/geologic fabric
- Salt mapping
- Depth to basement
- ArcGIS deliverables



Fugro Gravity & Magnetic Services

For personal assistance & consultation,
please contact fgmsdata@fugro.com or 713-369-6123.

www.fugro-gravmag.com

<p>ANSYTHE Donald I. Andrews 504-887-3432</p> 	 <p>GEOLOGY ENVIRONMENTAL MANAGEMENT</p> <p>GEM Consulting LTD Michael Louis Merritt admin@gemconsultingltd.com 1451 Applewood Road • Baton Rouge, LA 70808</p>
<p>THE BOEBEL COMPANY Oil and Gas Investments 170 Broadway Street, Suite 321 New Orleans, LA 70118 (504) 866-4313</p>	<p>H. WARREN BELL Oil and Gas Exploration 2500 Tanglewilde, Suite 485 Houston, TX 77063-2126 Bus (713) 266-7297 Fax (713) 266-7298</p>
<p>BOO-KER OIL & GAS CORP. Gray S. Parker 826 Union, Suite 300 Bus. (504) 581-2430 New Orleans, LA 70112 Fax (504) 566-4785</p>	<p>PHELPS GEOSCIENCE Onshore Gulf of Mexico Geology and Geophysics Prospect Generation and Evaluation Houston, TX jsphelps@yahoo.com (281) 398-5208</p>
<p>C & R EXPLORATION, INC. Carlo C. Christina Lawrence G. Ringham</p>	<p>RAFIDI OIL AND GAS, INC. Jaser N. Rafidi, President 4415 Shore Dr., Suite 202 Bus. (504) 722-2942 Metairie, LA 70006 Fax (504) 888-5539; Res. (504) 888-1661</p>
<p>C. R. RONDEAU Petroleum Geologist 119 W Southland Ave. Ironwood, MI 49938 Res. (906) 932-4692</p>	<p>ROY C. WALTHER Petroleum Geologist 2421 Prancer Street New Orleans, LA 70131 Bus. (504) 392-8513 Res. (504) 392-9332</p>
<p>CLASSEN EXPLORATION, INC. James S. Classen Looking for close in deals P.O. Box 140637 Bus. (208) 854-1037 Boise, ID 83714 Fax (208) 854-1029 classenllc@msn.com</p>	 <p>625 E. Kaliste Saloom Lafayette, LA 70508 16800 Greenspoint Dr., Suite 225-S Houston, TX 77060 1100 Poydras St., Suite 1050 New Orleans, LA 70163 www.StoneEnergy.com</p>
<p>D-O-R ENGINEERING, INC. 3-D and Geoscience Services 6161 Perkins Rd. Bus : (225) 765-1914 P O Box 80812 Baton Rouge LA 70898</p>	<p>TONY CAROLLO Consulting Geologist Unitization Geosteering Field Studies 1701 Peach Street Bus. (504) 885-0004 Metairie, LA 70001 Res. (504) 885-6829</p>
<p>EDWARD B. PICOU, JR. Consulting Micropaleontologist - Retired 228 St. Charles Ave., Suite 1330 C Bus. (504) 529-5155 New Orleans, LA 70130 Res. (504) 282-3096</p>	<p>Zot Oil & Gas, LLC Jim Zotkiewicz Prospect Generation and Evaluation 3200 Ridgelake Dr. Suite 207 Business: 504.831.4694 Metairie, LA 70002-4930 Email: jimzot38@zotoil.com</p>

Attributes

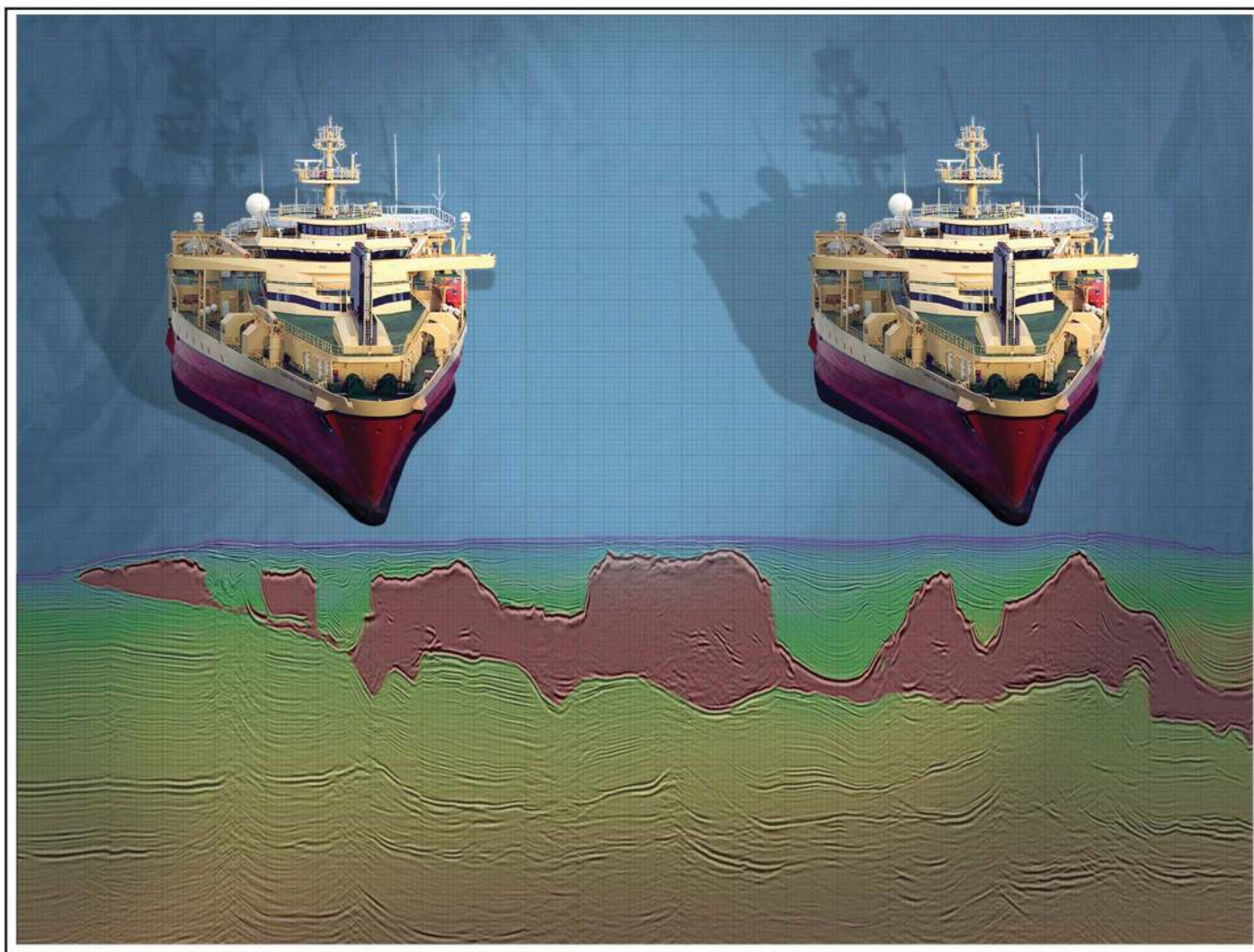
New Views on Seismic Imaging—Their Use in Exploration and Production



**31st Annual GCSSEPM Foundation
Bob F. Perkins Research Conference**
Houston, Texas
December 4-7, 2011
Houston Marriott Westchase Hotel

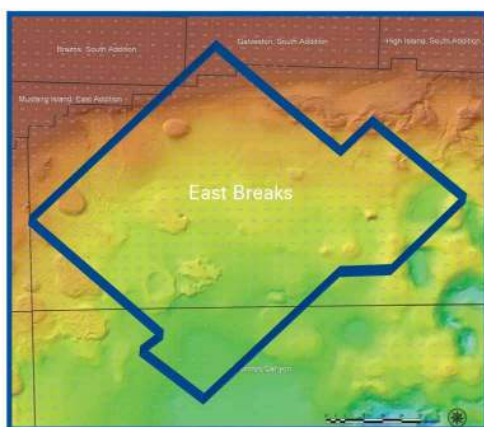
Conference information and
online registration
available on our Web site:
www.gcssepm.org





Crystal III, East Breaks

MultiClient Wide Azimuth



- **Size** - 480 OCS blocks
- **Focus** - Sub-Salt Miocene & Paleogene
- **Technology** - TTI Beam and RTM Imaging
- **Delivery** - Available Q4 2010

Houston
Tel: +1 281 509 8000
Fax: +1 281 509 8500

Oslo
Tel: +47 67 52 6400
Fax: +47 67 52 6464

London
Tel: +44 1932 37 6000
Fax: +44 1932 37 6100

A Clearer Image
www.pgs.com



NEW ORLEANS GEOLOGICAL SOCIETY



810 Union Street, Suite 300
New Orleans, LA 70112-1430

WWW.NOGS.ORG

MARINE PROPERTIES, LLC BERKSHIRE EXPLORATION CO.

MONTE C. SHALETT, CPL, PRESIDENT

3030 Lausat Street
Metairie, LA 70001-5924

BUS. (504) 831-7779
FAX. (504) 831-8315

PCI

Paleo Control, Inc.

Houston, Texas
713-849-0044

Drilling Wells, Studies and Data Base

Loyd Tuttle

Frio, SE Texas

Bob Liska

Wilcox, S and SE Texas

Jim Thorpe

Miocene and Cam-Miogyp



SEE YOUR DATA IN A WHOLE NEW LIGHT!

Take the pressure out of exploration
and drilling by seeing what you
are going to encounter.



eSeis

www.e-seis.com
713.531.1447

- Lithology & Fluids
- Depositional Facies
- Pore Pressure from V & Q
- Well Planning Consultation

