

# NOGS LOG

September 2005

Official Publication of the New Orleans Geological Society, Inc.

Volume 46, Number 3

## SEPTEMBER ACTIVITIES

### NOGS Events

#### September 12 NOGS Luncheon

Matthew W. Totten, Associate Professor in Petroleum Geology at Kansas State University, and an Adjunct Professor in the Department of Geology and Geophysics at the UNO, will present "Mechanisms for the distribution of Plio-Pleistocene volcanic ash beds in the Gulf of Mexico."

(See Page 7 for Abstract and Biographies.)

#### FAIRMONT HOTEL

The Blue Room on the  
First Level

Lunch served at 11:30am

#### ADMISSION:

with reservation ..... \$25.00

without reservation ..... \$30.00

Student Member with reservation ..... Free

#### September 25-27 GCAGS 2005

Gulf Coast Geologic Gumbo "A Recipe for Success"; Hyatt Regency New Orleans

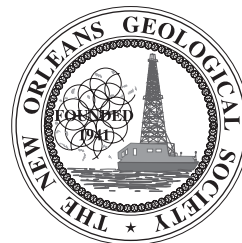
Web: <http://www.gcags2005.com/>

(See Page 11 for Announcement)

- September 10-13 **Mid-Continent Section AAPG 2005 Annual Meeting:** Target the Hidden Potential in the Wild West, Oklahoma City, Oklahoma. Hosted by the Oklahoma Geological Society. Web: <http://www.ocgs.org/>
- September 11-14 **AAPG International Conference and Exhibition,** CNIT La Defense, Paris, France, hosted by the American Association of Petroleum Geologists. Information: AAPG Convention Department, PO Box 979; Tulsa, OK 74101; USA, Phone: 1-918-560-2617 FAX: 1-918-560-2684 E-mail: [convене2@aapg.org](mailto:convене2@aapg.org), Web: <http://www.aapg.org/paris/>
- September 11-14 **22nd Annual Meeting The Society for Organic Petrology (TSOP),** Brown Hotel, Louisville, Kentucky, USA, hosted by the The Society for Organic Petrology (TSOP). Information: Jim Hower, Center for Applied Energy Research, 2540 Research Park Dr., Lexington, KY 40511-8410 USA, Phone: 859-257-0261 FAX: 859-257-0360 E-mail: [hower@caer.uky.edu](mailto:hower@caer.uky.edu), Web: <http://igs.indiana.edu/tsop2005>
- September 18-20 **Eastern Section, AAPG 2005 Annual Meeting,** Radisson Hotel at Waterfront Place, Morgantown, WV, USA, by the Eastern Section, AAPG. Information: Katharine Lee Avary, WV Geological Survey, Phone: 304/594-2331 FAX: 304/594-2575 E-mail: [avary@geosrv.wvnet.edu](mailto:avary@geosrv.wvnet.edu), Web: <http://karl.nrce.wvu.edu/esaapg/>
- September 19-24 **AEG-2005,** Flamingo Las Vegas Hotel, Las Vegas, Nevada, hosted by the Association of Engineering Geologists Annual Conference. Information: Jim Werle, Co-Chair ([jwerle@converseconsultants.com](mailto:jwerle@converseconsultants.com)), Barbara Luke, Co-Chair ([bluke@ce.unlv.edu](mailto:bluke@ce.unlv.edu)), Web: <http://www.aegweb.org>
- September 22 **2005 SEG/EAGE Distinguished Instructor Short Course, DISC,** "Insights and Methods for 4D Reservoir Monitoring and Characterization" presented by Rodney Calvert. See pages 14-15 for announcement.
- September 24-26 **Rock Mountain Section AAPG 2005 Annual Meeting:** Rocky Mountain Rendezvous-Rising to the Challenge, Jackson, Wyoming. Hosted by : Wyoming Geological Association. Web: <http://www.aapg.org/meetings/rms05/index.cfm>
- September 25-28 **Geothermal Resources Council 2005 Annual Meeting,** Reno, NV, hosted by the U.S. Department of Energy, California Energy Commission, Private Contributions. Ted J. Clutter, GRC, P.O. Box 1350, Davis, CA 95617, Phone: 5307582360
- September 25-29 **18th World Petroleum Congress 2005,** Johannesburg, South Africa, Sandton Convention Centre - South Africa, sponsored by: PetroSA, Co-sponsors: NOC, NNPC, Sonangol, Sonatrach + others. Information: Frederic Malgoire, 105 Salusbury Road, Phone: +44 20 7596 5080 FAX: +44 20 7596 5106 E-mail: [info@18wpc.com](mailto:info@18wpc.com), Web: [www.18wpc.com](http://www.18wpc.com)
- September 28-30 **Tectonics of Strike-Slip Restraining & Releasing Bends in Continental & Oceanic Settings,** The Geological Society, Burlington House, London, United Kingdom. Information: Lisa Robson, The Geological Society, Burlington House, Piccadilly, London, W1J 0BG, E-mail: [lisa.robson@geolsoc.org.uk](mailto:lisa.robson@geolsoc.org.uk) Web: <http://www.geolsoc.org.uk>

**NOGS Office**

Office Manager: Annette Hudson  
 Office Hours: 8:30am – 3:30pm on Monday-Wednesday-Friday  
 Tel: 504-561-8980 • Fax: 504-561-8988  
 E-mail: nogs@gs.net • Website: www.nogs.org  
 The office is located at Suite 300, 810 Union Street, New Orleans, LA 70112.  
 Correspondence and all luncheon reservations should be sent to the above address.  
 Sent to press on August 9, 2005.



**BOARD OF DIRECTORS**

President	Bret Hampton
Vice President	Scott A. Wainwright
Secretary	Tom Hudson
Treasurer	David E. Balcer
President-Elect	Michael N. Fein
Editor	Paul J. Post
Director 2006	George H. Rhoads
Director 2007	William Whiting
Director 2008	Alfred H. Baker, Jr.

Company	Phone	E-mail
Shell	504-728-6438	bret.hampton@shell.com
Mustang Energy.com	504-889-2700	swainwright@mustangenergy.com
Chevron	504-592-7163	tom.hudson@Chevron.com
Chevron	504-592-6725	dbalcer@Chevron.com
W & T Offshore	504-831-4171	lfeinmn1@cox.net
MMS	504-736-2954	paul.post@mms.gov
Chevron	504-592-6873	grhoads@Chevron.com
Consultant	504-947-8495	bootscon@aol.com
Beacon Exploration,LLC	504-836-2710	abaker1006@aol.com

**COMMITTEE**

AAPG Delegates  
 AAPG Student Chapter  
 AAPG Student Chapter  
 Advertising-Log  
 Awards  
 Ballot  
 Best Paper  
 Continuing Education  
 Employment Counseling  
 Entertainment  
 Environmental  
 External Affairs  
 Field Trip  
 Finance and Audit  
 Historical  
 Membership/Directory  
 New Geoscientists (NGNO)  
 Nominating  
 Non-Technical Education  
 Office Operations  
 Publications Sales  
 Photography  
 School Outreach  
 Scouting  
 Sponsorship  
 Technical Projects

**Chairperson**

Reese Pinney  
 Emily Martin  
 Sirel White  
 Timothy J. Piowowar  
 Michael N. Fein  
 David E. Balcer  
 David E. Reiter  
 Jeanne F. Phelps  
 TBA  
 Michael N. Fein  
 Don Evans  
 TBA  
 David Garner  
 David E. Balcer  
 Edward B. Picou, Jr.  
 Art Johnson  
 Anish Kumar  
 Robert B. Branson  
 Duncan Goldthwaite  
 Brenda E. Reilly  
 Edward B. Picou, Jr.  
 George H. Rhoads  
 Thomas C. Bergeon  
 David Gillis  
 David G. Cole  
 Jeanne F. Phelps

Gulf South Operators	504-566-9802	rbpinney@bellsouth.net
Tulane University	504-863-7500	emartin6@tulane.edu
UNO	504-736-2772	scwhite@uno.edu
Shell	504-728-4066	Tim.Piowowar@shell.com
W & T Offshore	504-831-4171	lfeinmn1@cox.net
Chevron	504-592-6725	dbalcer@Chevron.com
Murphy Expro USA	504-561-2945	david_reiter@murphyoilcorp.com
Phelps Geoscience Serv.	504-931-5651	pgeoserv@bellsouth.net
W & T Offshore	504-831-4171	lfeinmn1@cox.net
Murphy Expro USA	504-561-2497	don_evans@murphyoilcorp.com
Shell	504-728-6154	R.David.Garner@shell.com
Chevron	504-592-6725	dbalcer@Chevron.com
Consultant	504-529-5155	epicou@bellsouth.net
Hydrate Energy	504-464-6208	artjohnson51@hotmail.com
Schlumberger	504-592-5422	akumar11@new-orleans.oilfield.slb.com
Consultant	985-892-6194	hellik@aol.com
Consultant	504-887-4377	DGldthwt@aol.com
Murphy Expro USA	504-561-2478	brenda_reilly@murphyoilcorp.com
Consultant	504-529-5155	epicou@bellsouth.net
Chevron	504-592-6873	grhoads@Chevron.com
Shell	504-728-6480	thomas.bergeon@shell.com
Schlumberger	504-592-5360	gillis1@new-orleans.oilfield.slb.com
Consultant	985-626-9428	
Phelps Geoscience Serv.	504-931-5651	pgeoserv@bellsouth.net

**GCAGS 2005**

General Chairman	Jim Zotkiewicz	Zot Oil & Gas	504-831-0603	jimz@zotoil.com
------------------	----------------	---------------	--------------	-----------------

**NOGS LOG STAFF**

Editor	Paul J. Post	MMS	504-736-2954	paul.post@mms.gov
Editor-Elect	Robert Rooney	Shell Expl & Prod Co	504-728-6871	robert.rooney@shell.com
Auxiliary	Mary Petrocco	NOGA	337-828-5055	Petrocco@msn.com
Calendar	Ryan M. Ott	Chevron	504-592-6803	ottrm@Chevron.com
Info Tidbits	Robert Rooney	Shell Expl & Prod Co	504-728-6871	robert.rooney@shell.com
South Louisiana Drill Bits	TBA			
Webmaster	R. David Phelps	Phelps Geoscience	504-486-3225	dpgeostat4u@aol.com

**NOGS AUXILIARY**

Officers	Phone	Directors	Year	Phone
President	Beverly Kastler	June Perret	2006	504-288-3407
1st Vice-President	Linda Peirce	Judy Sabate'	2006	504-861-4335
2nd Vice-President	Susie Baker	Mary Walther	2006	504-392-9332
Secretary	Judy Lemarie'	Peggy Campbell	2007	504-283-2505
Treasurer	Peggy Rogers	Ann Gilbert	2007	504-889-2104
Parliamentarian	Carol Andrews	Dolores Murphy	2007	504-393-0878
Member-at-Large	Pam Heffner			

--- NOGS Contact List continued on page 8---



## *from the President*

Do you remember the first time you heard about Logging While Drilling, High-Amplitude Reflective Packages, or Shale Gouge Ratio? I do. I now take this technology and knowledge for granted and apply them in my work. I didn't learn these things in school (not a reflection on my alma mater, rather on when I attended) nor did I wake up one morning suddenly possessing this knowledge; I was actively seeking to learn. I was attending conventions, participating in workshops, and interacting with fellow geologists. We don't acquire knowledge when we will it; we acquire knowledge when we seek it. The upcoming GCAGS Convention is your opportunity to actively seek knowledge that you can apply.

As geologists, we learn in a variety of ways. The GCAGS Convention is catering to all of our learning styles. The poster sessions allow us to learn visually and through one-on-one conversations with the authors. For those of us that absorb lessons better with something liquid in our hands, consider attending the Sunday evening icebreaker and/or the Monday night President's reception. If modern analogs serve you best, consider attending one of the three field trips being offered. The trips will explore the geomorphology of modern streams, examine the surface expressions of the Maurepas-Ponchartrain basin, and review coastal restoration efforts. For those seeking their knowledge in the more traditional oral presentation format, session themes include Deepwater and Shelf Studies, Jurassic, Paleogene, Tertiary Geology, Applied Seismic, and Recent Geologic Studies. Certain topics are best learned in a classroom setting. The four short courses being offered at this year's meeting are an Introduction to ARCGIS, Uses of Seismic Sedimentology and Stratal Slicing, Reservoir Potential of Shelf-Edge Deltas and Linked Downslope Deposits, and a Seal Workshop. Learning from hands-on demonstrations by vendors is a fantastic way to

remember that NOGS is about the application of knowledge.

In addition to the traditional forums, this year the convention will have two unique events. First, the coastal process and restoration symposium, Restoring America's Coastal Heartland, has four full sessions and will culminate in a panel discussion entitled "Predicting Subsidence for the 21st Century: A Panel Discussion Understanding of Contemporary and Future Subsidence Processes and Rates". The symposium will address topics such as coastal processes, water quality, subsidence, and coastal restoration strategies. Second, the Arnold Bouma Symposium on Sunday is in honor of the retiring Professor Arnold Bouma. The symposium will consist of a luncheon and numerous speakers who will address Dr. Bouma's many contributions to geology.

To encourage you to attend GCAGS, I could say that as professionals we have an obligation to maintain our knowledge of geology and its application to the industry. I do believe we have a professional obligation; but I hope that by telling you a little about the convention you will want to attend and learn out of a desire, rather than obligation.

Abigail Adams stated "Learning is not attained by chance. It must be sought for with ardor and attended to with diligence." Don't leave your professional learning to chance. Register now for the GCAGS Convention; register online at: [www.gcags2005.com](http://www.gcags2005.com)

***Bret Hampton***

# Mechanisms For The Distribution Of Plio-Pleistocene Volcanic Ash Beds In The Gulf of Mexico

Matthew W. Totten

*to present at the Luncheon on September 12, 2005*

## ABSTRACT

Deep-water sedimentary beds, rich in volcanic ash, have been confirmed in the late Miocene to Pleistocene section of numerous offshore wells in the Gulf of Mexico (GoM). We have identified several silica-rich ashes, ranging between 10-30 meters thick deposited during the last 12 million years. Several huge eruptions have been reported from the Snake River/Yellowstone hotspot over this time period, all of which would have directed ash-fall into the Mississippi River drainage basin, and ultimately to the GoM. Based upon their proximity in time, and similar shard morphology and chemistry, we believe these eruptions are the most likely sources for the ashes found in the GoM.

The Huckleberry Ridge eruption, centered at Yellowstone, was one of the largest eruptions ever recorded. Volcanic ash was spread over a tremendous area of the United States, and has been recovered from the GoM, a wide variety of locations in the western US, the Great Plains, and the Pacific Ocean. We have identified Huckleberry Ridge derived ash

from multiple wells offshore Louisiana, and from several locations in Kansas. We propose a mechanism for its transport to, and deposition in, the GoM.

The ash outcrops in Kansas show evidence of a system overwhelmed with ash. Exotic boulders and large tree limbs are totally enclosed in ash, similar to recent deposits formed by the eruption of Mt. Pinatubo. These outcrops record a time when the Mississippi River drainage system was literally choked with ash. Within a short time period, this ash reached the depocenters in the GoM. Once the ash slug reached the GoM, ash accumulated on the shelf, before being finally deposited in deep water by turbidity flows. The glass shards were concentrated in the active channels, resulting in the thick, ash deposits reported in several wells. We have also observed a background level (<1%) of ash from shales of Huckleberry Ridge time, which record ash deposition in non-channel deposits. The model proposed for the Huckleberry Ridge ash is probably applicable to other significant Miocene-Pleistocene ashes in the GoM.

## BIOGRAPHY

**Dr. Matthew W. Totten** is currently an Associate Professor in Petroleum Geology at Kansas State University, and an Adjunct Professor in the Department of Geology and Geophysics at the University of New Orleans. He was a faculty member at UNO from 1992 until earlier this year. He received

a B.S. in Geology from the University of Kansas in 1977, and his M.S. in Geology from the University of Oklahoma in 1979. After ten years in industry, he returned to the University of Oklahoma, where he was awarded his Ph.D. in 1992.

**THE LUNCHEON RESERVATION DEADLINE IS SEPTEMBER 7, SO CALL THE NOGS OFFICE - TODAY!**

## “And Looking Ahead...”

The next luncheon will be October 3. Roger Kocken of Chevron will present "Using Recent Well Data to Determine Recovery Factors and Residual Hydrocarbon Saturations in Deplete Reservoirs; Examples from South Pass 78 Field, Gulf of Mexico." Contact the NOGS office at 561-8980 or use the link on the NOGS website (<http://www.nogs.org/>) to make your reservation.



# The Society for Organic Petrology (TSOP)

AGI Member Society  
AAPG Associated International Organization

## 22nd ANNUAL MEETING ANNOUNCEMENT

**Louisville, Kentucky, USA      September 11-14, 2005**

**Meeting themes:** CO<sub>2</sub> sequestration, coal utilization, coalbed methane, coal petrology, organic geochemistry

**Oral and Poster Sessions      Special technical session:** Dispersed organic matter

**Pre-meeting workshop:** CO<sub>2</sub> sequestration      **Field trip:** Falls of the Ohio

### MEETING CONTACTS:

**Jim Hower**

Center for Applied Energy Research  
2540 Research Park Drive  
Lexington, KY 40511-8410 USA  
Phone: 859-257-0261; Fax: 859-257-0360  
E-mail: hower@caer.uky.edu

**Maria Mastalerz**

E-mail: mmastale@indiana.edu

*TSOP presents a \$250 student paper award*

**Meeting and society details:**

**[www.tsop.org](http://www.tsop.org)**

## *NOGS CONTACT LIST*

--- continued from page 3 ---

### MEMORIAL FOUNDATION

#### BOARD OF TRUSTEES

		Company	Phone	E-mail
2005-06 Chairman	Brenda E. Reilly	Murphy Expro USA	504-561-2478	brenda_reilly@murphyoilcorp.com
2005-06 Secretary	Bret Hampton	Shell	504-728-6438	bret.hampton@shell.com
2005-06 Trustee	Reese Pinney	Gulf South Operators	504-566-9802	rbpinney@bellsouth.net
2005-06 Trustee	David E. Reiter	Murphy Expro USA	504-561-2945	david_reiter@murphyoilcorp.com
2006-07 Trustee	Edward B. Picou, Jr.	Consultant	504-529-5155	epicou@bellsouth.net
2006-07 Trustee	Robert W. Sabate'	Energetix Petroleum LC	504-861-4335	saboil@aol.com
2007-08 Trustee	TBA			
2007-08 Trustee	TBA			

### AAPG DELEGATES

#### Term Ends

Term Ends		Company	Phone	E-mail
2005	Reese Pinney	Gulf South Operators	504-566-9802	rbpinney@bellsouth.net
2005	Scott Wainwright	Bret Exploration	504-889-2700	scott_wainwright@hotmail.com
2005(a)	William J. Furlong	Consultant	504-482-4778	
2006	Tom Klekamp	El-Can Exploration	985-626-5808	klekamp@bellsouth.net
2006	Robert G. Murphy	Energy Partners	504-799-1918	bmurphy@eplweb.com
2006	Lisa Rhoades Goggin	Chevron	713-754-3604	LRhoades@Chevron.com
2006(a)	John Jurasin	Jurasin Oil & Gas	504-831-8874	JohnJurasin@jurasinoilgas.com
2006(a)	Brian J. O'Neill	Shell	504-728-4351	brian.oneill@shell.com
2007	Thomas C. Bergeon	Shell	504-728-6480	thomas.bergeon@shell.com
2007(a)	J. Stephen Tissue	Chevron	504-592-6030	stevetissue@Chevron.com



## ***NOGS Membership News & Information***

*These are your pages. We would like to fill these with your news. In addition to professional news from our members; e.g., promotions, transfers, moves, new employer, etc., we also welcome your success stories. Please email items to Paul Post at paul.post@mms.gov.*

### **In Remembrance of Bob Ballina**

Robert I. (Bob) Ballina, formerly a long-time NOGS member, passed away July 24 at the age of 74. Bob had a long career as an employee with several companies and as a consultant working primarily South Louisiana. Bob will be remembered by those who knew him as a cordial gentleman and an exemplary professional.

**Hold this date:  
October 8, 2005  
NOGS Kickoff Party!  
Watch this space  
- and your email inbox -  
for more info!**



**New NOGS  
Members  
July 2005**

**Ronald G. Bourgeois Jr.**  
126 Metairie Ct  
Metairie, LA 70001  
504-908-0561

**Clark J. Kinler**  
Minerals Management Service  
1201 Elmwood Park Blvd  
New Orleans, LA 70123  
504-736-2574

**Phillip R. Maddux**  
Chevron  
Technical Team Leader  
3520 General DeGaulle Dr.  
New Orleans, LA 70114  
504-364-2058

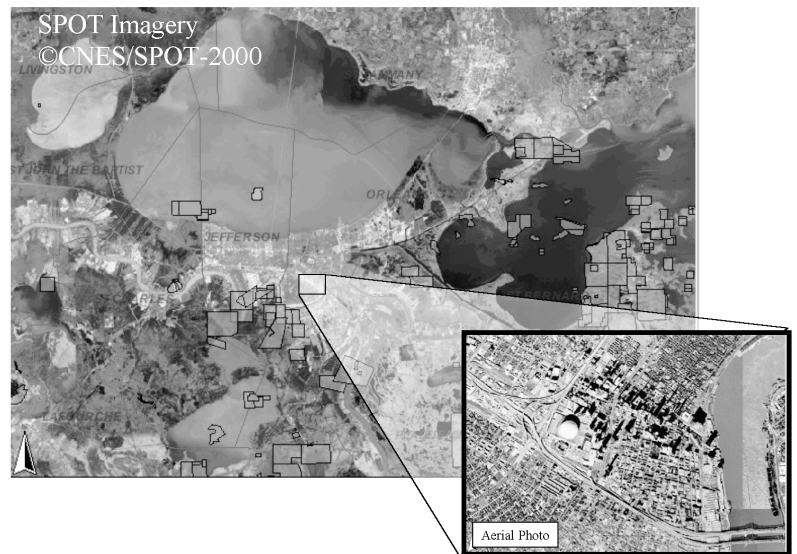
**Gary J. Rutherford**  
Minerals Management Service  
Geologist  
1201 Elmwood Park Blvd  
New Orleans, LA 70123  
504-436-2928

☞ **DNR showcases successful Geographic Information System:** The Louisiana Department of Natural Resources (DNR) began the Strategic Online Natural Resources Information System (SONRIS) in 1999. The system consists of Oracle databases, electronic document image access, and custom online interactive maps via a geographic information system (GIS). The Oracle database contains millions of records related to oil and gas exploration and production data from the early 1900's, mineral lease information dating to the 1930's, coastal restoration and management data from the early 1980's, and over 7 million electronic page images including Conservation field orders, Mineral Resources lease documents, and Coastal use permits. The interactive map GIS feature has more than 40 spatial data layers including aerial photographs, lease tract nominations, active leases, wells, section-township-range, SPOT imagery (ãCNES/SPOT-2000), LandSat 2000, and other layers.

According to the DNR website, since Louisiana DNR implemented its first public oil/gas well GIS Web site in 1998, the number of users of DNR's data has increased at an astounding rate. It is estimated that the oil and gas industry could be saving millions of dollars per year by their use of SONRIS. Savings result from having industry staff conducting preliminary work for drilling oil or gas wells or leasing state lands and waterbottoms from their offices, many of which are not in Louisiana, instead of having to spend days and even weeks at the DNR main or regional offices using public network computers or paper files for each project. The coastal industry benefits from SONRIS by having complete access to regulatory files and huge amounts of coastal restoration project and scientific monitoring data available.

SONRIS system can be accessed through the Louisiana Department of Natural Resources website at [dnr.louisiana.gov](http://dnr.louisiana.gov).

Image Samples from SONRIS Website



☞ **Cassini reveals Saturn's eerie-sounding radio emissions:** Bill Kurth and Don Gurnett, University of Iowa researchers working on a project funded by NASA, describe their recent findings on Saturn's radio emissions as reminiscent of a Halloween sound track. They investigated sounds similar to those associated with the Earth's northern lights. The study used data gathered from the Cassini spacecraft's radio and plasma wave instrument. Their findings were published on July 23rd in the journal "Geophysical Research Letters". "All of the structures we observe in Saturn's radio spectrum are giving us clues about what might be going on in the source of the radio emissions above Saturn's auroras," says Kurth. "We believe that the changing frequencies are related to tiny radio sources moving up and down along Saturn's magnetic field lines." Cassini's instrument is higher resolution than that of the previous Voyager spacecraft, and has provided new information on the spectrum and variability of the radio emissions. The radio waves are converted to audio recordings by shifting the frequencies down into the audio frequency range. No theory is currently agreed on to fully explain the phenomenon.

Samples of the sounds can be found at <http://www-pw.physics.uiowa.edu/cassini/> or at <http://www-pw.physics.uiowa.edu/space-audio/>.

☞ **A gold mine for science:** The Homestake gold mine, in the Black Hills of South Dakota, is one of two sites being considered for the location of the future Deep Underground Science and Engineering Laboratory (DUSEL). "The Homestake mine is a vast site capable of hosting a comprehensive suite of experiments in all major fields of science, including low background experiments and very large detectors in particle and nuclear physics, and multidisciplinary deep sub-surface studies in geosciences, geoengineering and microbiology," said Kevin Lesko, leader of the Homestake underground lab proposal, and nuclear physicist with the US DOE's Berkley Lab. Of particular interest to earth scientists, the site will offer a close look at the earth's crust, opportunities to monitor movement of ground water, biochemistry of organisms that live under high temperature and pressure conditions, and possibilities for carbon dioxide sequestration. Eight sites in the US and Canada were considered for the future DUSEL. The other site still being considered is the Henderson Mine, an active molybdenum mine in Empire, Colorado.

For more information about the Homestake underground lab proposal, contact Kevin Lesko at [KTLesko@lbl.gov](mailto:KTLesko@lbl.gov) or by phone at (510) 486-7731. For more about DUSEL, visit <http://www.int.washington.edu/DUSEL/>.

Robert Rooney

# 2004-2005 NOGS Memorial Foundation Scholarships

## GRADUATE

### Lee H. Meltzer Memorial

*\$3,000 Cash Award*

#### LSU

After graduating Summa Cum Laude in Physics with a minor in Geology, **Jill Womack** was accepted as a candidate for a Master's degree in Louisiana State University's Department of Geology and Geophysics in the fall of 2004. Upon acceptance, she was awarded the Applied Depositional Geosystems Fellowship for her graduate studies. She intends to investigate and report on the expansion and retreat of the Antarctic ice sheets and their subsequent impact on global climate, eustasy, and ocean ecology using previously reported studies and data acquired during field research in Antarctica. This summer, Jill worked as an intern at Devon Energy Corporation in Houston, Texas where she will gain experience through the examination of relevant projects to oil exploration and production.

## GRADUATE (continued)

### James A. Gilreath Memorial

*\$3,000 Cash Award*

#### TULANE

**Troy Sampere** is currently a PhD student at Tulane University's Department of Earth and Environmental Science. He received a B.S. from the University of Rochester, and a M.S. in Environmental Sciences from Portland State University. He is interested in sediment dynamics and carbon cycling in aquatic systems. His research focuses on contrasting sediment source input across the Mississippi margin and shelf. He is using state-of-the-art biomarker techniques (pigment and lignin phenols) to characterize terrestrial and marine organic particulate matter delivery to the margin in recent and down-core sediment profiles. His research will be facilitated through close interaction with his major advisor Dr. Thomas Bianchi. Troy's goal is to complete his dissertation and defend it by the spring 2007 semester. He plans to work in either government or academia.

### NOGS Memorial Foundation

*\$3,000 Cash Award*

#### UNO

Daniel Gill, from Mentor, Ohio, is a M.S. candidate at the University of New Orleans. He received his B.S. from The Ohio State University. As an undergraduate, he studied biological engineering with a focus on ecology. Daniel also contributed toward several restoration-based graduate student research projects, which influenced him to pursue his current research in coastal land loss. He is currently working on his thesis investigating volumetric fluctuations of the roots of a dominant saltmarsh macrophyte on the Gulf Coast. Daniel also contributed toward several restoration-based graduate student research projects, which influenced him to pursue his current research in coastal land loss. His primary thesis advisor at UNO is Dr. Denise J. Reed. The title of his M.S. thesis is: Flooding Influences on Volumetric Contributions of Organic Matter to Accretion in Salt Marshes of Coastal Louisiana. He intends to complete his thesis in May of 2006, and plans to pursue a career in environmental consulting and restoration.

### ***NOGS Memorial Foundation Scholarships***

*The NOGS Memorial Foundation Scholarships are granted each year to those students who have demonstrated exceptional talent in or commitment to their geologic studies and projects. It is the policy of the Memorial Foundation to posthumously name these scholarships after those members whose own extensive contributions to the profession have been particularly praiseworthy.*

***Lee Hilliard Meltzer** for expertise in oil and gas appraisal and exploration, as well as manifold and unstinting support of and service to - from AAPG to NOGS - the region's professional geologic organizations.*

***James Allen (Al) Gilreath** for his work as chief tool developer of down-hole instrumentation and 'pattern' interpretation, earning him - world-wide - the title, 'Mr. Dipmeter'.*

***Jules Braunstein** gained wide recognition in the oil and gas industry not only for exceptional technical expertise but also as an exacting editor. His long career was conspicuous for selfless devotion - and as carried on by his surviving wife, **Olga**, in her bequeathal of the residue of their estate to NOGS Memorial Foundation Scholarship Fund.*



# 2004-2005 NOGS Memorial Foundation Scholarships

## SENIOR

### Jules & Olga Braunstein Memorial

*\$2,500 Cash Award*

#### LSU

**Bryan Anderson** is from Baton Rouge, Louisiana. As a geology undergraduate at LSU, his major interest was in sedimentology and structural geology. Bryan subsequently decided to focus his graduate career in these areas. He plans on being a professor of the Earth Sciences. He is currently the president of the Geology Club of Louisiana State University. Bryan previously received the Outstanding Senior Award in the Department of Geology and Geophysics at LSU, and the Mineralogical Society of America Undergraduate Excellence award.

#### TULANE

Nicole Champitto is an undergraduate student who switched to an Environmental Geoscience degree from Chemistry. She has always been interested in sciences, winning two scholarships from Pepsi Co. in Math and Science. Nicole hopes to pursue a career in Earth and Environmental Science, joining 'Teach for America' to teach children Earth Science in inner city schools, as well as pursuing a career in studying climate change.

#### UNO

**Bryan Rogers** is a senior in the department of Geology at the University of New Orleans. He has a 3.477 GPA and a 3.78 in geology. He received several academic awards including the Department of Geology and Geophysics Jules and Olga Braunstein Memorial Undergraduate Scholarship. Bryan works for the Lake Pontchartrain Basin Foundation as its GIS/Information System Specialist. He plans to continue his education, enrolling as a candidate for a Master's degree in Coastal Geology emphasizing the use of GIS to model land loss and restoration programs on the coast.

## JUNIOR

### Jules & Olga Braunstein Memorial

*\$2,000 Cash Award*

#### LSU

**John St. Amant** excelled as a geology undergraduate at Louisiana State University. He was recently awarded the outstanding junior scholarship in the Department of Geology and Geophysics. He is a member of the newly formed geology club, and has recently volunteered to give presentations on Allosaurus to visitors at Louisiana State University's museums day. His major interest is in vertebrate paleontology; however, he will not immediately pursue graduate study in this area. John will be commissioned a second lieutenant in the United States Marine Corps in December of 2005, and has been accepted into flight training. In the fall, he will be serving as the battalion commander of his Naval ROTC unit. He plans to enroll as a graduate student in geology at some point during his military career.

#### TULANE

**Davin Wallace** is originally from Katy, Texas. He currently studies Environmental Geoscience at Tulane University, where he has excelled in his geology courses. Davin frequently takes advantage of New Orleans' location by learning about the sedimentation of the Mississippi River, and the role it plays on the environment. His major interests include the interactions between geology and the environment, as well as subsurface geology. He will do his field camp in New Zealand, where he plans to study hydrology. Davin plans to enter graduate study in the spring of 2007 at Tulane University.

#### UNO

**Miranda Robbins** is an undergraduate geology student at the University of New Orleans. Her major interests include mineralogy, geochemistry, and the study of komatiites. Her senior thesis will focus on crystal morphologies and inducing variant morphologies through original crystal genesis. Miranda is currently a member of SGE, SEG, AAPG, and UNOGGS. Her future plans include a graduate career in geochemistry with a focus on the use of isotopic data to determine the petrogenesis of komatiites, followed by two years of service with the Peace Corps. Afterward, she would like to continue her studies, building upon her Master's thesis, pursuing a doctorate degree in geochemistry.

# New Orleans Geological Auxiliary News

It is really a great honor and pleasure to serve another term as President of the New Orleans Geological Auxiliary. I appreciate your vote of confidence in electing me as President for 2005-2006. I hope you all enjoyed this past year as much as I did. It was so much fun celebrating the 50th anniversary of the Auxiliary.

The Board has once again planned a very exciting and fun-filled year for our members. If you are not currently a member or have not attended many luncheons in the past few years, we hope you will get active in NOGA. We will start our year with a luncheon on September 14 at Ann Gilbert's beautiful home. We all enjoy catching up on summer events at the home of one of our members. On November 9, we will take a bus trip to historic Houmas House, in Burnside, Louisiana. It has been several years since we enjoyed a bus trip to one of Louisiana's beautiful plantation homes, so we hope you will join us for this special treat. Barreca's Restaurant, on Metairie Road, will be the setting for our February 8, 2006 luncheon. Judy Anderson will give us a presentation on entertaining. March 18 is the date for our annual Spring Social at the lovely home of Trez and Jim Zotkiewicz. Many of us got a preview of their beautiful home at our May luncheon, when interior designer Nancy Bounds presented a program highlighting renovations to their house. Our year will conclude on May 10 with our "Installation Luncheon" in the Patio Room at Commander's Palace.

The Auxiliary is also happy to once again be able to assist NOGS with plans for the GCAGS Convention to be held in New Orleans on September 25-27. Susie Baker and Trez Zotkiewicz have been hard at work preparing an exciting time for the spouses who will be in attendance at the convention. Several ladies from the Auxiliary are assisting them with the Hospitality Room, decorations, favors, and serving as hostesses for the event. We hope that you will be able to attend and join in the fun. We always love helping with conventions in the city.

I hope that you will join us this year for all of our activities. It would be wonderful if all of the NOGS husbands would bring this copy of the NOGS LOG home to their wives, or to show it to them if it is delivered to their homes. We would love to add more members to our roster, and also encourage inactive members to once again join us. If you have not already sent in your dues, please mail your dues with the below application form.

Beverly Kastler  
NOGA President

## *NOGA Application Form*

*Dues: \$15.00*

*Name* \_\_\_\_\_

*Home Address* \_\_\_\_\_

*Home phone* \_\_\_\_\_

*Husband's Name* \_\_\_\_\_

*Husband's Company* \_\_\_\_\_

*Please make check payable to New Orleans Geological Auxiliary and  
mail with application to: Peggy Rogers*

*2580 Valentine Ct*

*New Orleans LA 70131*

**EAST TEXAS GEOLOGICAL SOCIETY  
CALL FOR PAPERS**

**THE GULF COAST MESOZOIC SANDSTONE GAS PROVINCE**

**NOVEMBER 16, 2006**

**TYLER, TEXAS, HARVEY HALL CONVENTION CENTER**

The East Texas Geological Society is sponsoring a symposium on the geology, reservoir characteristics, and petrophysical character of the Cotton Valley, Bossier, Travis Peak (Hosston), Woodbine and other gas producing formations in the Gulf Coast Mesozoic. The area of interest includes East Texas, North Louisiana, and Mississippi. The Society is actively seeking authors that would like to present their work to an audience of industry professionals involved in the exploration and production of petroleum. The proceedings of the symposium will be published as a volume of papers and distributed to the symposium participants and attendees.

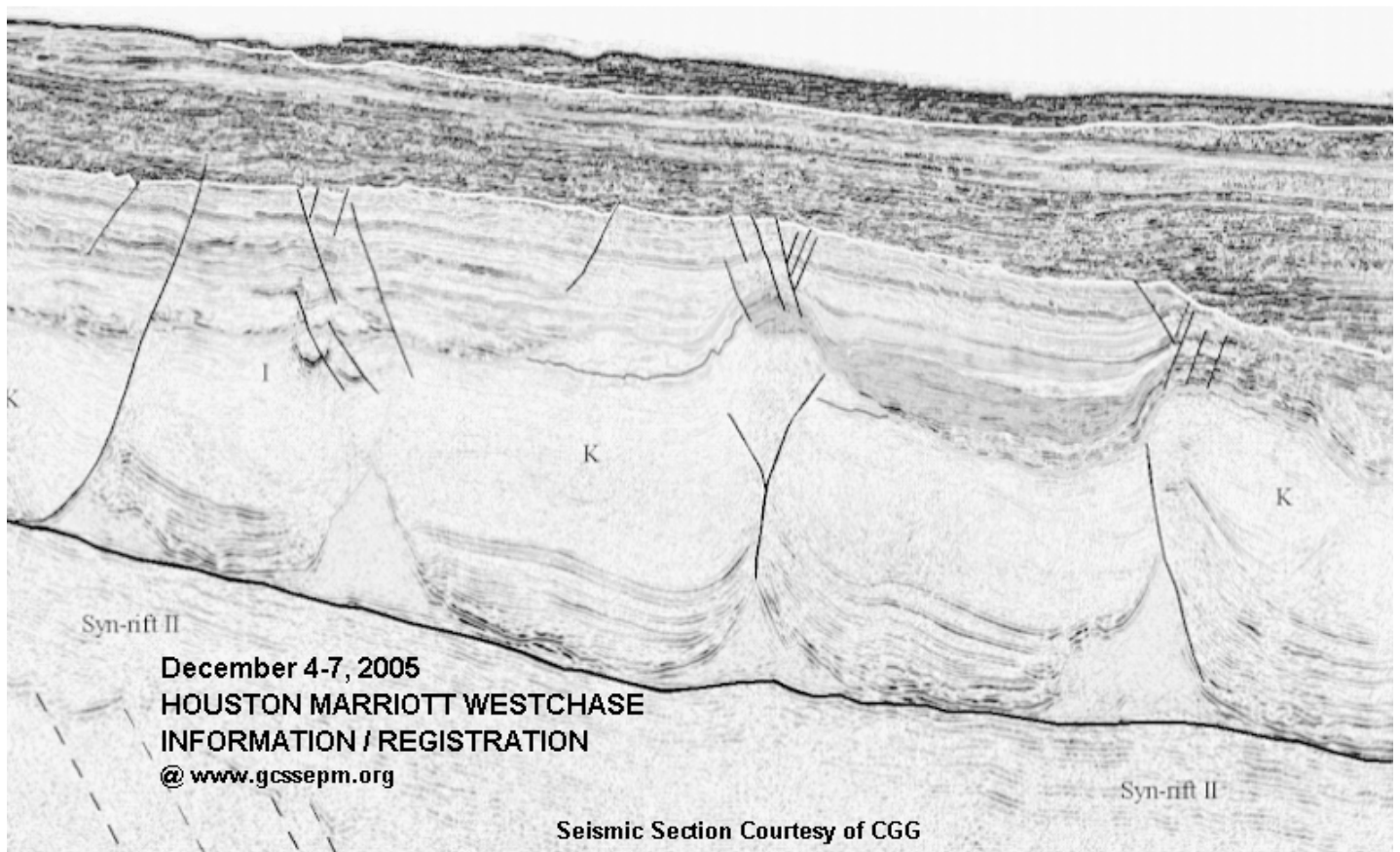
The presentations should be designed to last about 25 minutes, and the publication guidelines are those used by the Gulf Coast Association of Geological Societies. Please submit a title and a brief description of the theme of the presentation to the East Texas Geological Society by November 15, 2005. Both hard copy and on-line submissions are acceptable.

Contact information: Rick Turner  
Vice President  
East Texas Geological Society  
Barrow-Shaver Resources Company  
100 E. Ferguson, Ste. 712  
Tyler, Texas 75702  
rick-bsr@tyler.net  
903-593-5221

All submittals are welcome. Questions should be directed to Rick Turner. The East Texas Geological Society looks forward to your participation in this informative and enjoyable event.

---

**PETROLEUM SYSTEMS OF DIVERGENT CONTINENTAL MARGIN BASINS**  
**25<sup>th</sup> ANNUAL GCSSEPM FOUNDATION BOB F. PERKINS RESEARCH CONFERENCE**



## South Louisiana and Offshore Exploration and Production Activity

- On July 21, McMoRan Exploration Company, the most aggressive deep explorer in Louisiana state waters and the OCS shelf, held a conference call reporting their second-quarter and six-month 2005 results and updates on Gulf of Mexico exploration and production and Main Pass Energy Hub™ Activities. The pre-call press release, the webcast of the conference call, and the pdf version of the slides used can be accessed at <http://www.mcmoran.com/>. If you are keeping up with this activity, check this information soon.
- Murphy Oil Corporation held their Annual Analyst Meeting on May 10. One of their presentations, Murphy's U.S. Exploration and Production, focused on their Gulf of Mexico activities. You can view it at <http://www.murphyoilcorp.com/ir/presentations/>.
- Dominion Resources did an excellent custom publication supplement to Hart's E&P, and Oil and Gas Investor, in July on Devils Tower. If you do not subscribe to either of those magazines and did not receive this supplement, try to order it. The Devils Tower story is worth reading.
- BHP Billiton provided a briefing paper on the Neptune field (Atwater Valley, blocks 573, 574, 575, 617, and 618). It is available at <http://www.bhpbilliton.com/bbContentRepository/News/RelatedContent/NeptuneBriefingPaper.pdf>. The field, discovered in 1995, was the first discovery in the Mississippi Fan Fold Belt. First oil from this 100-150 MMBOE field is anticipated by the end of calendar year 2007.
- Nexen Petroleum U.S.A. Inc., a wholly owned subsidiary of Nexen Inc., and operator of Green Canyon Block 512 (Knotty Head prospect) that is currently being drilled by Unocal Corp. (operator of the initial exploration well) made a press announcement on June 30. At that time, the well had encountered more than 300 feet of apparent hydrocarbon pay in a secondary objective based on measured-while-drilling logs. The well was at 29,670 feet and had yet to penetrate the primary objective lower Miocene section. The well is planned for a total depth of 32,500 feet. Nexen has a 25% working interest in Knotty Head. Co-owners include Unocal Corp. (25%), BHP Billiton (25%), and Anadarko Petroleum Corporation (25%).
- EPL provided an update of their activity on July 20, 2005. This New Orleans-based independent maintains an active program onshore and on the shelf. The press release is available on the EPL website at: <http://ir.eplweb.com/phoenix.zhtml?c=124556&p=irol-newsArticle&ID=732666&highlight=>
- MMS has just released a summary of US GoM Subsalt Exploration. The data is located at <http://www.gomr.mms.gov/homepg/offshore/gulfocs/subsalt/subsalt.html>. A list of non-proprietary and publicly announced subsalt wells and a map outlining the areal extent of the subsalt play in the Gulf of Mexico are included. Other non-proprietary well data and information can be downloaded from the MMS website.

*Paul Post*

# THE NEW ORLEANS GEOLOGICAL SOCIETY MEMORIAL FOUNDATION, INC.

July 1, 2004 through August 6, 2005

The Memorial Foundation is an IRS Tax Exempt Code #501 (c)(3) organization. The Federal I.D. is: 72-1220999. Please consider making your donation prior to the close of this year's fiscal cycle which is September 30, 2005. Your individual support in any amount will help meet the IRS Guidelines for our Foundation. *Thanks!*

## \$10,000 AND ABOVE

Gibbett Hill Foundation  
*In Memory of Steve & Marion Millendorf,  
William J. Prutzman, Roger G. Vincent & Ron Youngblood*

## \$3,000 TO \$9,999

NOGS Golf Tournament May 2005  
*In Memory of Bill Craig*

## \$500 TO \$1,000

Paleo-Data, Inc.  
*In Memory of T. Wayne Campbell*

Robert J. Ardell  
*In Memory of T. Wayne Campbell*

Robert H. Baillio, Jr.  
*In Memory of T. Wayne Campbell*

Susie and Al Baker  
*In Memory of Robert J. Ingram*

Ray Bane  
*In Memory of T. Wayne Campbell*

Thomas C. Bergeon

Francis X. Bland  
*In Memory of Al Gilreath  
In Memory of Wayne H. Grimes  
In Memory of Andy Sestak  
In Memory of Burton L. Shullaw*

Irion Bordelon Sr.

Hilary James Brook  
Mr. & Mrs. Jack Bryant  
*In Memory of William B. Rodan*

Elisha A. Buckner  
C. Dan Bump  
*In Memory of T. Wayne Campbell*  
J. Sybil Callaway

Dain K. Calvin  
*In Memory of T. Wayne Campbell*

Beverly & Carlo Christina  
*In Memory of William B. Rodan*

Carlo C. Christina  
*In Memory of Al Gilreath*

ChevronTexaco  
*Matching Funds*

Robey H. Clark  
James S. Classen  
*In Memory of T. Wayne Campbell*

Clarence F. Conrad  
Roger L. Corbeille

Mr. & Mrs. Charles J. Corona  
*In Memory of I. D. Simpson, Jr.*

Charles J. Corona  
*In Memory of Robert J. Ingram*

Michiel C. de Groot  
M. R. "Bob" Douglass  
ExxonMobil Foundation  
*Matching Funds*

Michael N. Fein  
Richard H. Fillon  
Leanne S. French  
*In Memory of William B. Rodan*

Laurens Gaarenstroom  
Peter G. Gray  
Bret Hampton  
Bernard L. Hill Jr.  
Dan E. Hudson  
Thomas Charles Klekamp  
*In Memory of Richard E. Heffner  
In Memory of Ronnie Youngblood*

Reuben J. Klibert, Jr.  
Russell J. Landry  
*In Memory of T. Wayne Campbell*  
Jack & Beverly Langford  
*In Memory of Thomas H. "Tom" Philpott  
In Memory of William B. Rodan*

Michael O. Maler  
William J. Malin  
George M. Markey, Jr.  
*In Memory of Max Neusom*

Louis L. McCormick  
Paul C. McWilliams  
Mrs. Lee H. Meltzer  
*In Memory of Wayne H. Grimes  
In Memory of Thomas H. "Tom" Philpott  
In Memory of William B. Rodan*

Casey R. Mobley  
New Orleans Geological Auxiliary  
*In Memory of Joan Sawyer*

Russell H. Nordwell  
Richard A. Olsen  
William S. Peirce  
Edward B. Picou Jr.  
*In Memory of T. Wayne Campbell*

*In Memory of Robert J. Ingram*

Charles C. Roberts  
*In Memory of William B. Rodan*

Rhonda Roederer  
*In Memory of T. Wayne Campbell*  
Edmund L. Russell  
*In Memory of Robert J. Ingram*

# FONO FUND

The FONO Fund accepts contributions that are invested and the income dedicated to assure sufficient financial resources will always be available to maintain the NOGS business office. To date no funds from this account have been used. Contributors are reminded that donations to the FONO Fund are not covered by the IRS 501 (c)(3) tax exempt classification and should be reported as a business expense on your IRS tax report.

## \$3,000 AND ABOVE

GCSSEPM Foundation

## \$250 TO \$500

Richard W. Boebel  
James A. Hartman

## UP TO \$249

Donald I. Andrews  
Alfred H. Baker Jr.  
Joseph E. Boudreaux  
Jack G. Bryant  
J. Sybil Callaway  
T. Wayne Campbell  
Anthony Carollo Jr.  
Robey H. Clark  
Richard P. Colomes  
Willis E. Conatser  
Roger L. Corbeille  
Joffre J. Crouere  
Richard A. Edmund  
Michael N. Fein  
Michael A. Fogarty  
Peter G. Gray  
Bernard L. Hill Jr.  
Dan E. Hudson  
Robert J. Ingram  
Thomas Charles Klekamp  
Reuben J. Klibert, Jr.  
William J. Malin  
George Markey, Jr.

Paul C. McWilliams  
Robert G. Murphy  
Richard A. Olsen  
William S. Peirce  
James P. Raymond, Jr.  
C. R. Rondeau  
Robert Rooney  
Rudolf B. Siegert  
Raymond Stephens  
Robert C. Weissmann  
James W. Yeldell Jr.  
Jim Zotkiewicz

CONTRIBUTIONS FROM  
JULY 1, 2004 THROUGH  
AUGUST 6, 2005

Robert W. Sabate'  
George W. Schneider, Jr.  
*In Memory of William B. Rodan*  
Tom Schunick  
*In Memory of T. Wayne Campbell*

James A. Seglund  
George D. Severson  
Monte C. Shalett  
Rudolph B. Siegert  
*In Memory of T. Wayne Campbell*

Dr. J. O. Snowden  
Raymond O. Steinhoff  
*In Memory of Harold E. Vokes*

Jack M. Thorson  
William C. Ward  
William M. Whiting  
Armour C. Winslow  
*In Memory of Rita Menzel Winslow*  
Frances A. Wiseman  
*In Memory of Steve Widdicombe*  
Jim Zotkiewicz

*In Memory of Bill Craig*

Robin A. Broussard  
ChevronTexaco  
Bernard L. Hill, Jr.  
John E. Kuczewicz, Jr.  
Robert Rooney  
John C. Scheldt  
Rudolph B. Siegert  
Dr. J. O. Snowden  
William M. Whiting

Luncheon "Roundup"  
Donations

For September Events: *See Cover*

2 0 0 5

**October 3 NOGS Luncheon**, Fairmont Hotel. Roger Kocken of Chevron will present "Using Recent Well Data to Determine Recovery Factors and Residual Hydrocarbon Saturations in Deplete Reservoirs; Examples from South Pass 78 Field, Gulf of Mexico."

**October 8 NOGS Kickoff Party**. More details to follow by e-mail and in the next NOGS LOG.

**October 9-15 Earth Science Week**, Earth Science Week 2005 Celebrates "Geoscientists Explore our Earth", American Geological Institute, 4220 King Street, Alexandria, VA 22302-1502. Information: Web: <http://www.earthsciweek.org/>.

**October 6-8 AAPG/SEG Student Expo**, Westin Galeria, Houston, TX, USA, hosted by AAPG & SEG. Michael Deal, E-mail: [michael.m.deal@exxonmobil.com](mailto:michael.m.deal@exxonmobil.com) Web: <http://www.studentexpo.info>

**October 9-12 2005 SPE Annual Technical Conference and Exhibition**, Dallas, TX, USA, hosted by the Society of Petroleum Engineers. Information: Debbie Weaver, P.O. Box 833836, Richardson, TX 75083-3836, FAX: 972-952-9435 E-mail: [dweaver@spe.org](mailto:dweaver@spe.org), Web: <http://www.spe.org>

**October 12-15 NABGG 25th Annual Technology Conference - "Geosciences - Bridging The Gap"** Raleigh, North Carolina, Crabtree Marriott Hotel, Raleigh, North Carolina, USA, by the NABGG. Information: Roxanne Lamb, 1730 E. Parham Road Richmond, VA 23228, Phone: 804-261-2653 FAX: 804-261-2659 E-mail: [rhlamb@usgs.gov](mailto:rhlamb@usgs.gov) Web: <http://www.nabgg.org>

**October 16-19 2005 GSA Annual Meeting & Exhibition**, Salt Lake City, Utah. Web: <http://www.geosociety.org/meetings/2005/>

**October 19-20 Compressional Deformation within Passive Margins**, Burlington House, London, hosted by The Geological Society of London. Information: Lydia Dumont, The Geological Society, Burlington House, Piccadilly, London, W1J OBG, Phone: +44 (0)20 7434 9944 FAX: +44 (0)20 7494 0579 E-mail: [lydia.dumont@geolsoc.org.uk](mailto:lydia.dumont@geolsoc.org.uk), Web: [http://www.geolsoc.org.uk/template.cfm?name=Passive\\_Margins](http://www.geolsoc.org.uk/template.cfm?name=Passive_Margins)

**October 31-November 4 National Cave And Karst**

**Management Symposium**, Clarion Hotel of Albany, Albany, NY, USA, hosted by the Northeastern Cave Conservancy. Information: Michael Warner, P.O. Box 10, Schoharie, NY 12157, Phone: 518 295 7978 FAX: 518 295 7981 E-mail: [Mike@speleobooks.com](mailto:Mike@speleobooks.com), Web: <http://www.nckms.org/2005>

**November 6-11 SEG International Exposition and 75th**

**Annual Meeting**, George R. Brown Convention Center, Houston, Texas, USA, hosted by the Society of Exploration Geophysicists. Information: Steve Emery, 8801 S. Yale Ave, Tulsa, OK 74137, Phone: 918-497-5539 FAX: 918-497-5552 E-mail: [semery@seg.org](mailto:semery@seg.org), Web: <http://www.seg.org>

**November 21-23 International Petroleum Technology**

**Conference (IPTC)**, Doha, Qatar, by AAPG/EAGE/SEG/SPE. Information: E-mail [iptc@iptcnet.org](mailto:iptc@iptcnet.org).

**November 30-December 1 Petroleum Geoscience**

**Collaboration Conference**, Burlington House, London, hosted by The Geological Society of London. Information: Lydia Dumont, The Geological Society of London, Burlington House, Piccadilly, London, W1J OBG, Phone: +44 (0)20 7434 9944 FAX: +44 (0)20 7494 0579 E-mail: [lydia.dumont@geolsoc.org.uk](mailto:lydia.dumont@geolsoc.org.uk), Web: <http://www.geolsoc.org.uk/template.cfm?name=PG4389754378>

**December 4-7 Petroleum Systems of Divergent Continental Margin Basins, 25th Annual Bob F. Perkins Research**

**Conference**, Houston Marriott Westchase, Houston, Texas, USA, by the GCSSEPM. Information: Norman C. Rosen, 2719 South Southern Oaks Drive, Houston, TX 77068-2610, Phone/FAX: 281 586-0833 E-mail: [GCSSEPM@gcssepm.org](mailto:GCSSEPM@gcssepm.org) Web: <http://www.gcssepm.org>

**December 5-9 AGU Fall Meeting**, Moscone Center, West, San

Francisco, California, by the American Geophysical Union. (AGU Meetings Department, 2000 Florida Avenue, NW, Washington, DC 20009, Phone: 202-777-7330, FAX: 202-328-0566, E-Mail: [fm-help@agu.org](mailto:fm-help@agu.org), Web: <http://www.agu.org/meetings/fm05/>)

2 0 0 6

**February 8-9 Oil and Gas Habitats of Russia and Surrounding Regions**, Burlington House, The Geological society, London, by The Geological Society of London. (Lucy Kimber, The Geological Society, Burlington House, Piccadilly, London, W1J OBG, Phone: +44 (0)20 7434 9944 FAX: +44 (0)20 7494 0579 E-mail: [lucy.kimber@geolsoc.org.uk](mailto:lucy.kimber@geolsoc.org.uk) Web: [http://www.geolsoc.org.uk/template.cfm?name=Oil\\_and\\_Gas\\_Habitats\\_in\\_Russia](http://www.geolsoc.org.uk/template.cfm?name=Oil_and_Gas_Habitats_in_Russia))

**April 9-12 AAPG/SEPM 2006: Perfecting the Search**, Houston, TX