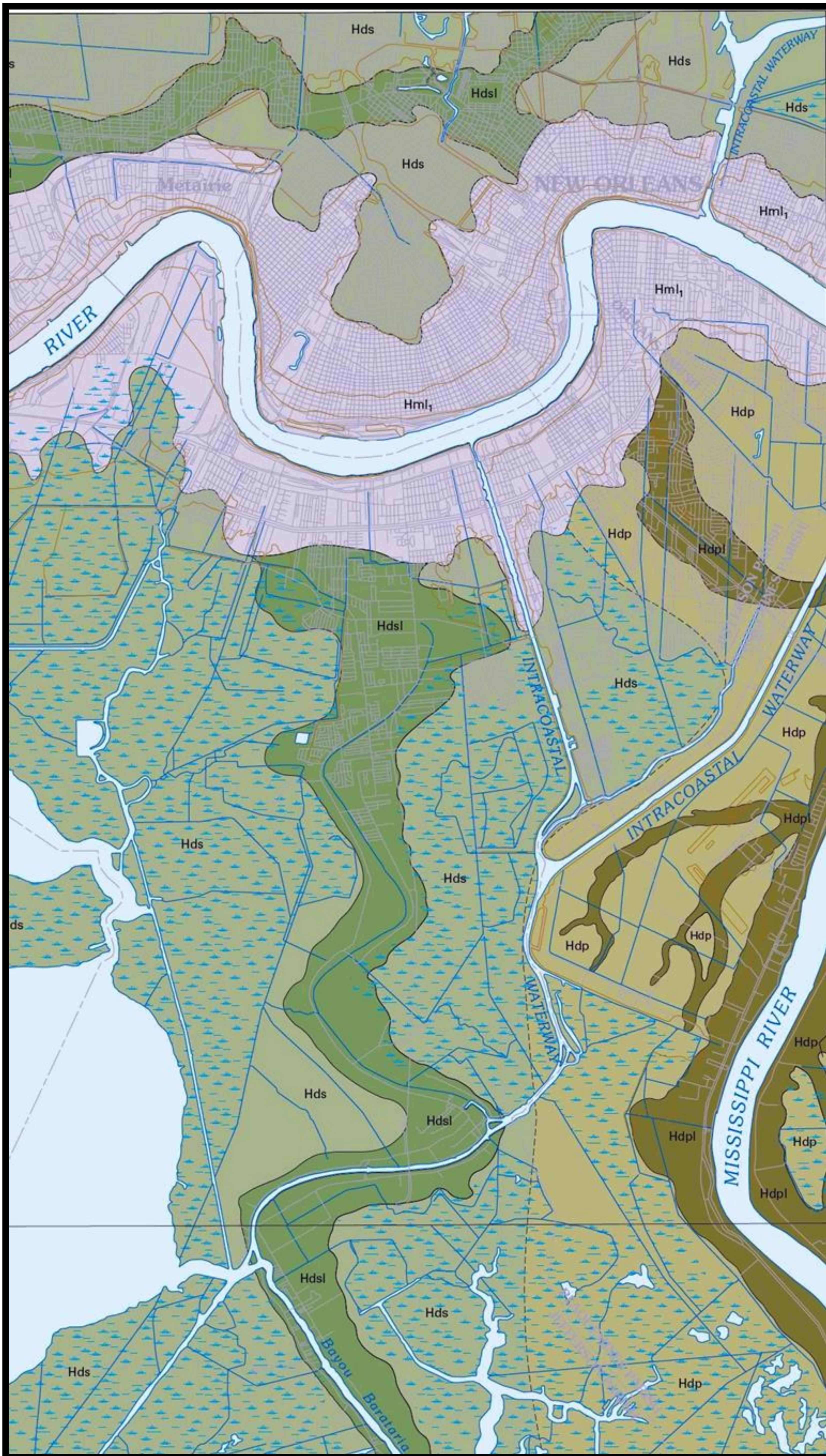
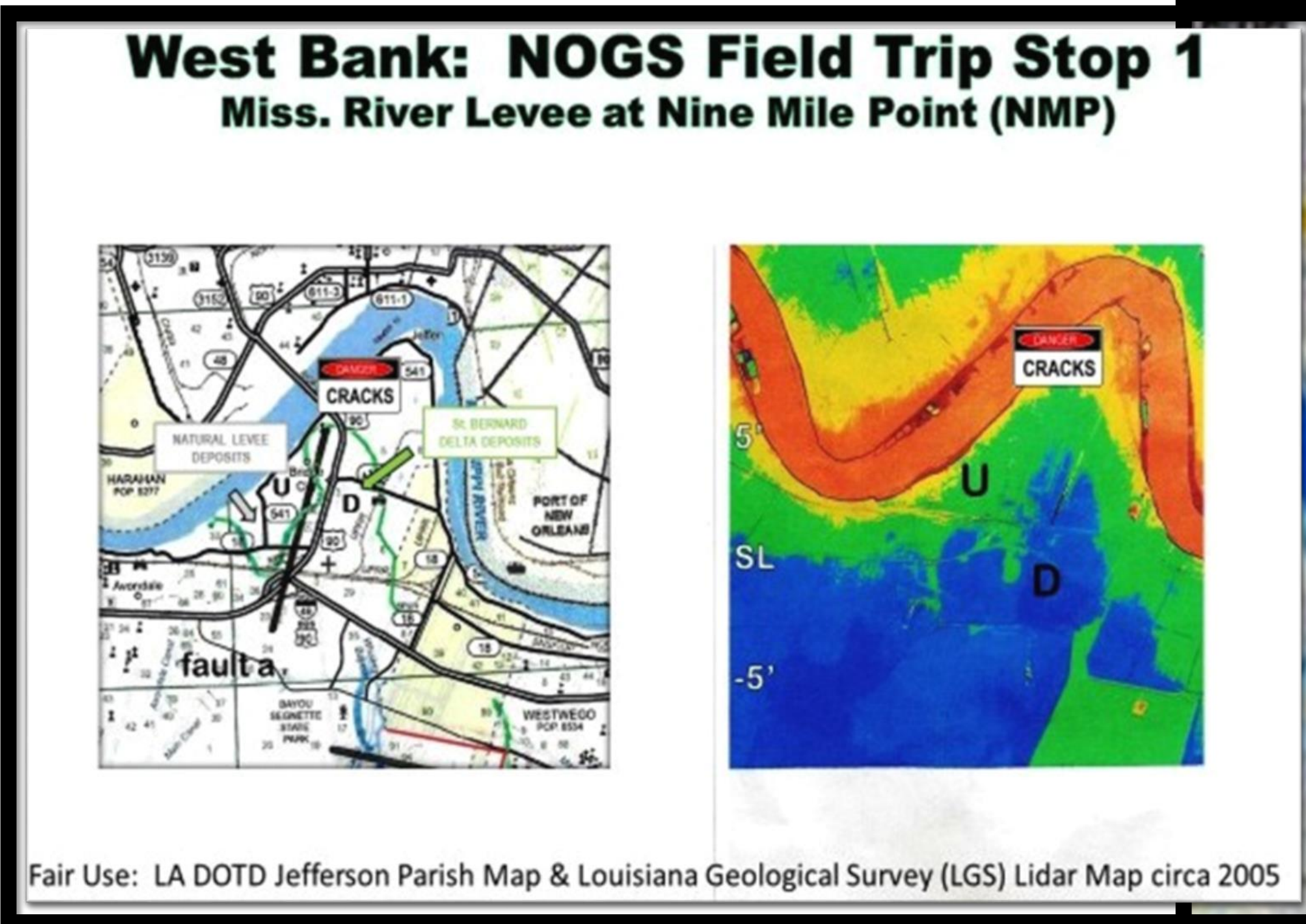


Special Interest Geohazard Areas on the West Bank of New Orleans

By Mike Merritt



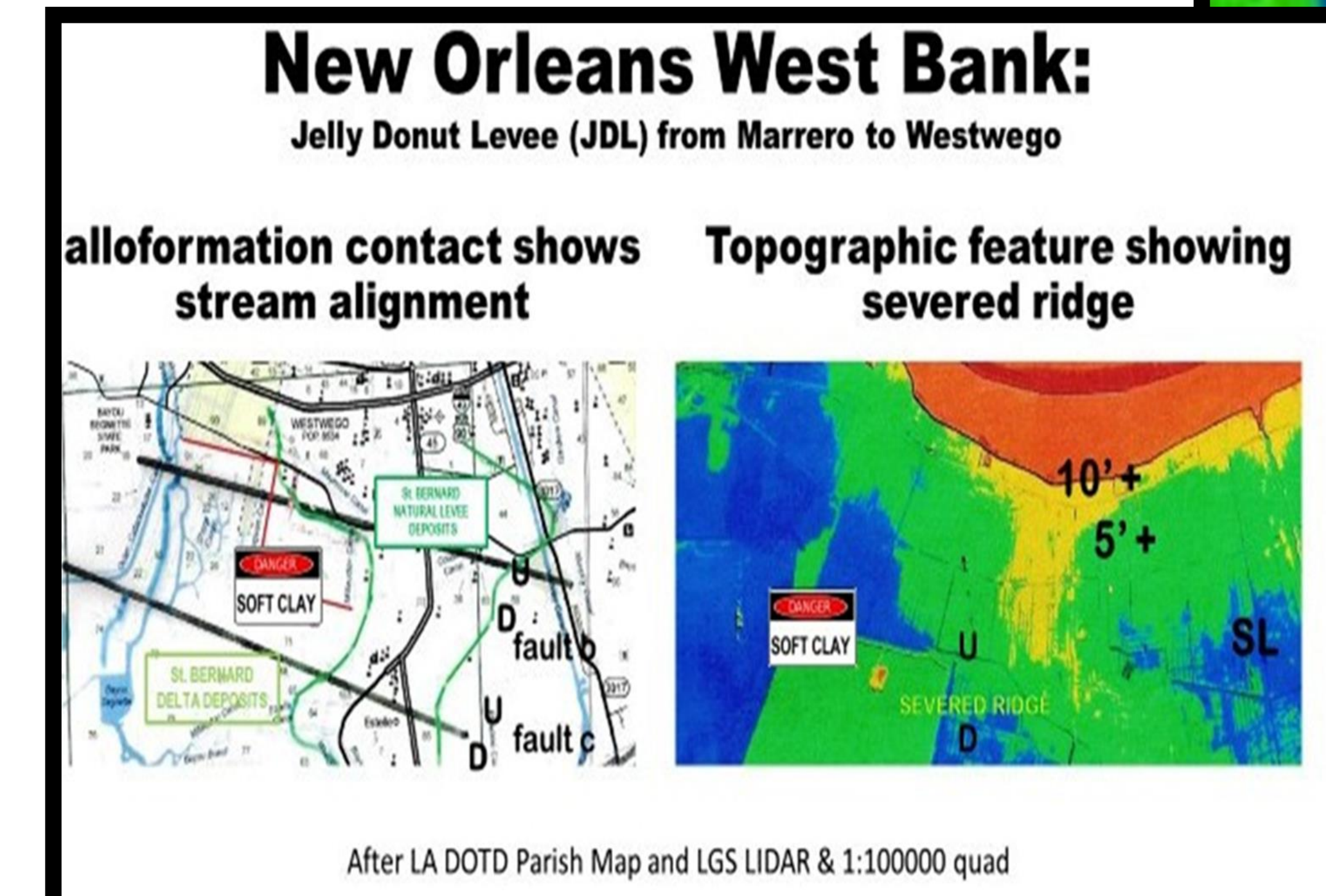
LGS New Orleans Surface Geology Map



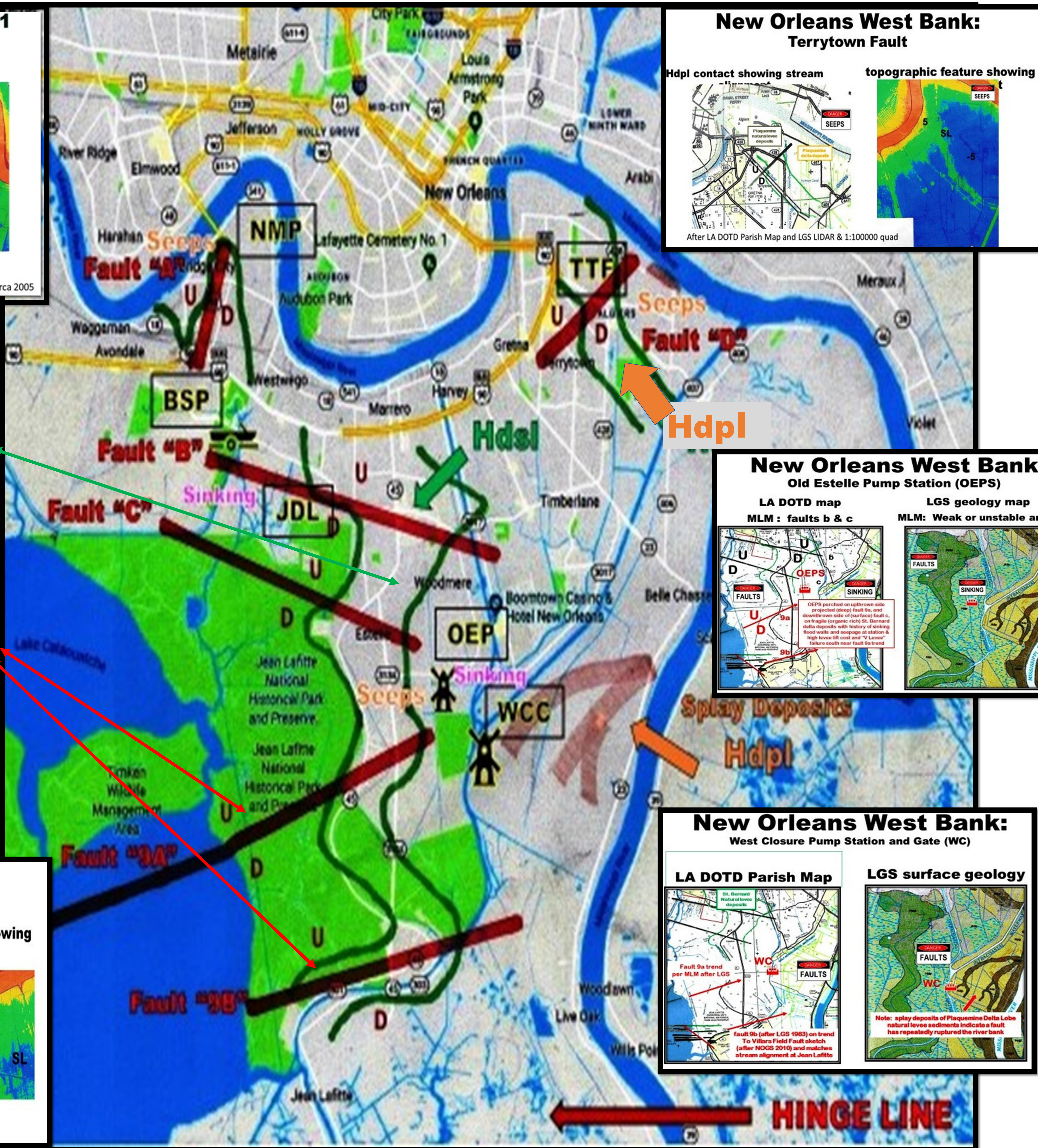
Accented lines denote natural levee deposits of St. Bernard & Plaquemine lobes after LGS New Orleans

Faults 9A & 9B after LGS Regional Cross Section Folio and NOGS O&G Fields of LA

Interpretation based on Merritt recommendations to Levee Commissioners since 2007



Printed October 1, 2019



Fair Educational Use Google Base Map